



Catalog Number GTX100240 Package: 25 µl, 100 µl Proclin ★★★★★ (1)

Product Name LC3B antibody

Full Name microtubule-associated protein 1 light chain 3 beta

Synonyms microtubule-associated proteins 1A/1B light chain 3 antibody, autophagy-related ubiquitin-like modifier LC3 B antibody, MAP1A/MAP1B LC3 B antibody, MAP1A/MAP1B light chain 3 B antibody, MAP1A/1B light chain 3 B antibody, MAP1 light chain 3-like protein 2 antibody, autophagy-related protein LC3 B antibody, microtubule-associated proteins 1A/1B light chain 3B antibody, MGC93422 antibody, Map1lc3 antibody, Mpl3 antibody, zbs559 antibody, Map1lc3b antibody, microtubule-associated protein 1 light chain 3 beta antibody

Product Description Rabbit Polyclonal antibody to LC3B (microtubule-associated protein 1 light chain 3 beta)

Background may mediate MAP1A and MAP1B microtubule binding activity during development of the nervous system [RGD]

Host Rabbit

Clonality Polyclonal

Immunogen Recombinant fragment corresponding to a region within amino acids 1 and 142 of LC3B (Uniprot ID#Q62625)

Antigen Species Rat

Species Reactivity Human, Mouse, Rat

Applications IHC-P, WB

Application Note	Suggested dilution	Protocol	Reference
IHC (Formalin-fixed paraffin-embedded sections)	1:100-1:1000*		
Western blot	1:500-1:10000*		

Not tested in other applications.

\*Optimal dilutions/concentrations should be determined by the researcher.

Positive Controls U87-MG , SK-N-SH , IMR32 , SK-N-AS , PC-3 , U87-MG , SK-N-SH , Rat brain , mouse brain

Predicted Target Size 16 kDa

Cellular Localization Cytoplasm , Endomembrane system; Lipid-anchor , Cytoplasmic vesicle , autophagosome membrane; Lipid-anchor

Form Supplied Liquid

Purification Purified by antigen-affinity chromatography.

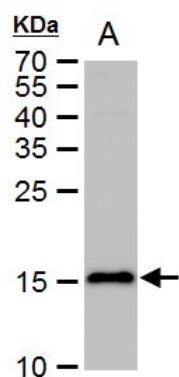
Concentration 1 mg/ml

Storage Buffer 1XPBS, 20% Glycerol (pH7). 0.025% proclin was added as a preservative.

Storage Instruction Keep as concentrated solution. Aliquot and store at -20°C or below. Avoid multiple freeze-thaw cycles.

Notes For *In vitro* laboratory use only. Not for any clinical, therapeutic, or diagnostic use in humans or animals. Not for animal or human consumption.

ResearchArea [Cell Biology](#) > [Autophagy](#)



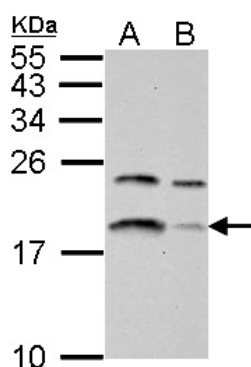
#### GTX100240 LC3B antibody WB Image

LC3B antibody detects LC3B protein by western blot analysis.

A. 50 µg rat brain extract

15 % SDS-PAGE

LC3B antibody (GTX100240) dilution: 1:500



#### GTX100240 LC3B antibody WB Image

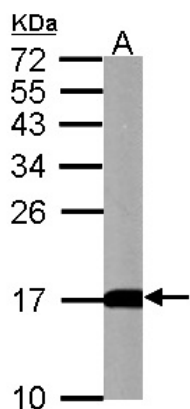
LC3B antibody detects LC3B protein by western blot analysis.

A. 30 µg U87-MG whole cell lysate/extract

B. 30 µg SK-N-SH whole cell lysate/extract

15 % SDS-PAGE

LC3B antibody (GTX100240) dilution: 1:500



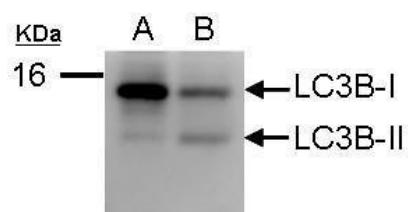
#### GTX100240 LC3B antibody WB Image

LC3B antibody detects LC3B protein by western blot analysis.

A. 50 µg mouse brain lysate/extract

15 % SDS-PAGE

LC3B antibody (GTX100240) dilution: 1:500



GTX100240\_40555\_CT\_1\_WB.jpg

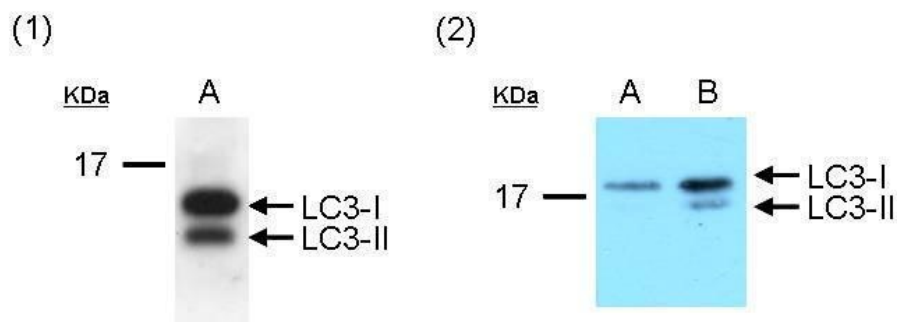
Sample (50 ug of whole cell lysate)

A: Huh7

B: virus infected Huh7

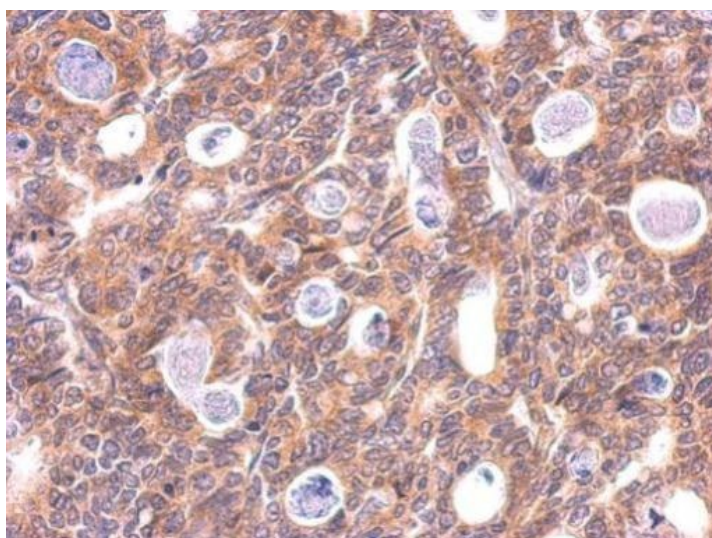
12% SDS PAGE

GTX100240 diluted at 1:1000



#### GTX100240 WB Image

Western blot analysis of LC3 protein in PC-3 cell line. (1) 20ug of whole cell lysate was separated by using Urea gel (6M Urea in 13.5% SDS gel) and detected with GTX100240 unpurified serum diluted at 1:4000. (2) PC-3 cells were cultured with serum-containing medium (A) and serum-free medium (B) for 3 days. 5ug of whole cell lysate was separated by using Urea gel (6M Urea in 13.5% SDS gel) and detected with GTX100240 antibody diluted at 1:5000.

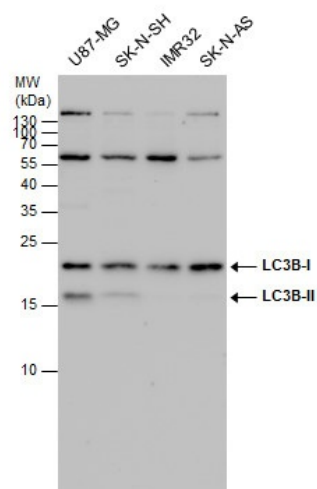


#### GTX100240 LC3B antibody IHC-P Image

LC3B antibody detects LC3B protein at cytosol on human gastric carcinoma by immunohistochemical analysis.

Sample: Paraffin-embedded gastric carcinoma.

LC3B antibody (GTX100240) dilution: 1:500.



#### GTX100240 LC3B antibody WB Image

LC3B antibody detects LC3B protein by western blot analysis. Various whole cell extracts (30 µg) were separated by 15 % SDS-PAGE, and blotted with LC3B antibody (GTX100240) diluted by 1:500