



Catalog Number GTX100190 **Package:**25 µl, 100 µl

Proclin

Product Name alpha 1a Adrenergic Receptor antibody

Full Name adrenergic, alpha-1A-, receptor

Synonyms ADRA1C antibody, ADRA1L1 antibody, ALPHA1AAR antibody, ADRA1A antibody, "adrenergic, alpha-1A-, receptor variant 3 antibody", G protein coupled receptor antibody, "adrenergic, alpha-1A-, receptor variant 8 antibody", alpha-1A adrenoceptor antibody, alpha-1C adrenergic receptor antibody, "adrenergic, alpha-1A-, receptor variant 5 antibody", alpha-1A adrenoceptor antibody, "adrenergic, alpha-1A-, receptor variant 1 antibody", alpha-1A adrenergic receptor antibody, "adrenergic, alpha-1A-, receptor antibody"

Product Description Rabbit Polyclonal antibody to alpha 1a Adrenergic Receptor (adrenergic, alpha-1A-, receptor)

Background Alpha-1-adrenergic receptors (alpha-1-ARs) are members of the G protein-coupled receptor superfamily. They activate mitogenic responses and regulate growth and proliferation of many cells. There are 3 alpha-1-AR subtypes: alpha-1A, -1B and -1D, all of which signal through the Gq/11 family of G-proteins and different subtypes show different patterns of activation. This gene encodes alpha-1A-adrenergic receptor. Alternative splicing of this gene generates four transcript variants, which encode four different isoforms with distinct C-termini but having similar ligand binding properties. [provided by RefSeq]

Host Rabbit

Clonality Polyclonal

Immunogen Synthetic peptide contain a sequence corresponding to a region within amino acids 206 and 260 of alpha 1a Adrenergic Receptor (Uniprot ID#P35348)

Antigen Species Human

Species Reactivity Human

Predicted Cross Reactivity species Mouse, Rat, Dog, Pig, Rabbit, Rhesus Monkey, Bovine, Guinea pig

Predict Reactivity Note Mouse (100%), Rat (100%), Dog (100%), Pig (100%), Rabbit (100%), Rhesus Monkey (100%), Bovine (100%), Guinea pig (100%)

Applications ICC/IF, IHC-P, WB

Application Note

	Suggested dilution	Protocol	Reference
ICC/IF	1:100-1:1000*		
IHC (Formalin-fixed paraffin-embedded sections)	1:100-1:1000*		
Western blot	1:500-1:3000*		

Not tested in other applications.

*Optimal dilutions/concentrations should be determined by the researcher.

Positive Controls Jurkat , Raji , NCI-H929

Predicted Target Size 51 kDa

Cellular Localization Cell membrane

Form Supplied Liquid

Purification Purified by antigen-affinity chromatography.

Preservative Proclin

PreservativeConc 0.025%

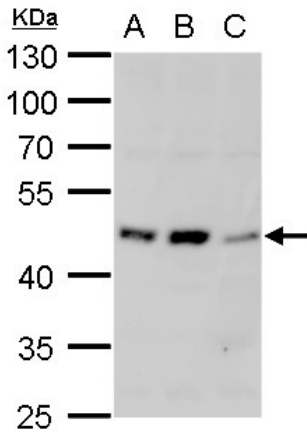
Concentration 1 mg/ml

Storage Buffer 0.025% proclin/ 20% Glycerol in PBS

Storage Instruction Keep as concentrated solution. Aliquot and store at -20°C or below. Avoid multiple freeze-thaw cycles.

Notes For *In vitro* laboratory use only. Not for any clinical, therapeutic, or diagnostic use in humans or animals. Not for animal or human consumption.

ResearchArea [Disease Related](#) > [Alzheimer's disease](#)
[Disease Related](#) > [Cardiovascular](#) > [Heart](#) > [Heart disease](#)
[Disease Related](#) > [Cardiovascular](#) > [Vessels](#)

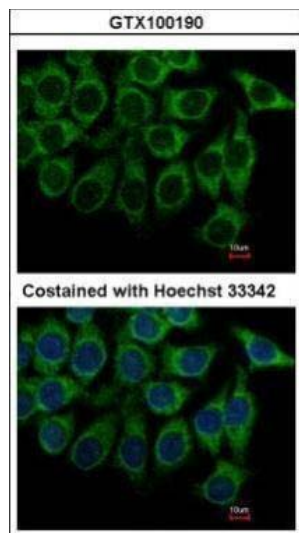


GTX100190 alpha 1a Adrenergic Receptor antibody WB Image

alpha 1a Adrenergic Receptor antibody detects alpha 1a Adrenergic Receptor protein by western blot analysis.

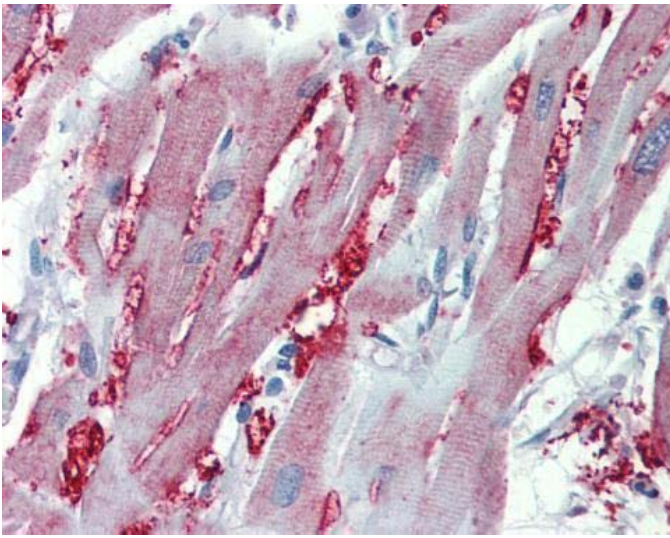
- A. 30 µg Jurkat whole cell lysate/extract
 - B. 30 µg Raji whole cell lysate/extract
 - C. 30 µg NCI-H929 whole cell lysate/extract
- 10 % SDS-PAGE

alpha 1a Adrenergic Receptor antibody (GTX100190) dilution: 1:1000



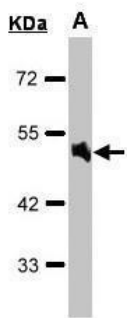
GTX100190_39391_IFA.jpg

Immunofluorescence analysis of methanol-fixed Hep3B, using alpha 1a Adrenergic Receptor(GTX100190) antibody at 1:500 dilution.



GTX100190_39391_IHC.jpg

Immunohistochemical analysis of paraffin-embedded Heart, using alpha 1a Adrenergic Receptor(GTX100190) antibody(10 µg/ml).



GTX100190_WB.jpg

Sample(30 µg of whole cell lysate)

A:Raji (GTX27908)

10% SDS PAGE

GTX100190 diluted at 1:1000