



Catalog Number GTX100085 **Package:**25 µl, 100 µl Proclin

Product Name RecQ1 antibody [C1C3]

Full Name RecQ protein-like (DNA helicase Q1-like)

Synonyms RECQL1 antibody, RecQ1 antibody, RECQL antibody, recQ protein-like 1 antibody, ATP-dependent DNA helicase Q1 antibody, "DNA helicase, RecQ-like type 1 antibody", DNA-dependent ATPase Q1 antibody, RecQ protein-like (DNA helicase Q1-like) antibody

Product Description Rabbit polyclonal antibody to RecQ1 (RecQ protein-like (DNA helicase Q1-like))

Background The protein encoded by this gene is a member of the RecQ DNA helicase family. DNA helicases are enzymes involved in various types of DNA repair, including mismatch repair, nucleotide excision repair and direct repair. Some members of this family are associated with genetic disorders with predisposition to malignancy and chromosomal instability. The biological function of this helicase has not yet been determined. Two alternatively spliced transcripts, which encode the same isoform but differ in their 5' and 3' UTRs, have been described. [provided by RefSeq]

Host Rabbit

Clonality Polyclonal

Isotype IgG

Target RecQ1

Immunogen Recombinant fragment corresponding to a region within amino acids 400 and 649 of RecQ1 (Uniprot ID#P46063)

Antigen Species Human

Species Reactivity Human, Mouse

Predicted Cross Reactivity species Bovine

Predict Reactivity Note Bovine (82%)

Applications ICC/IF, IHC-P, WB

Application Note	Suggested dilution	Protocol	Reference
ICC/IF	1:100-1:1000*		
IHC (Formalin-fixed paraffin-embedded sections)	1:100-1:1000*		
Western blot	1:500-1:3000*		

Not tested in other applications.

*Optimal dilutions/concentrations should be determined by the researcher.

Positive Controls 293T , A431 , H1299 , HeLa , HepG2 , Molt-4 , Raji , NIH-3T3

Predicted Target Size 73 kDa

Cellular Localization Nucleus

Form Supplied Liquid

Purification Purified by antigen-affinity chromatography.

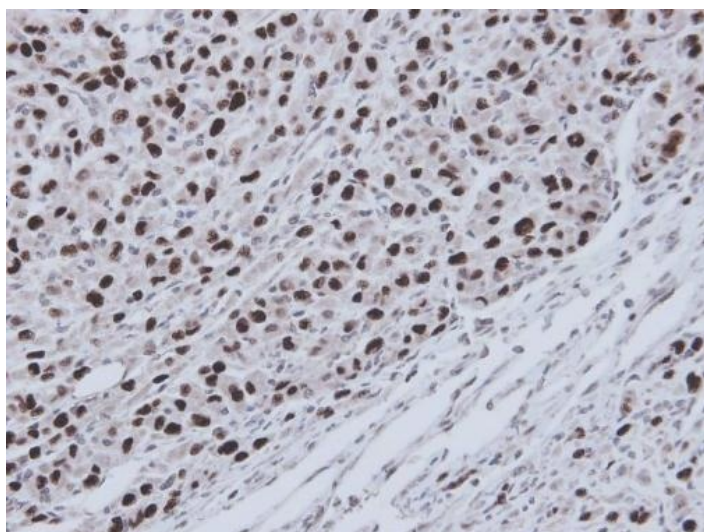
Concentration 1 mg/ml

Storage Buffer 1XPBS, 20% Glycerol (pH7). 0.025% proclin was added as a preservative.

Storage Instruction Keep as concentrated solution. Aliquot and store at -20°C or below. Avoid multiple freeze-thaw cycles.

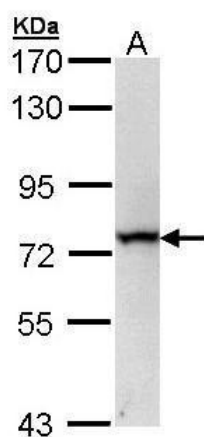
Notes For *In vitro* laboratory use only. Not for any clinical, therapeutic, or diagnostic use in humans or animals. Not for animal or human consumption.

ResearchArea [Cancer](#) > [Type of cancer](#) > [Pancreatic](#)



GTX100085_IHC.jpg

Immunohistochemical analysis of paraffin-embedded U87 xenograft, using RecQ1(GTX100085) antibody at 1:100 dilution.



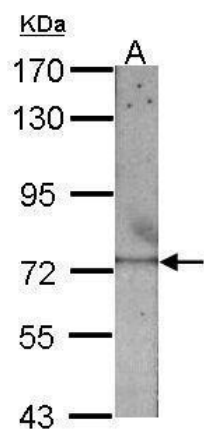
GTX100085_WB.jpg

Sample (30 ug of whole cell lysate)

A: 293T

7.5% SDS PAGE

GTX100085 diluted at 1:1000



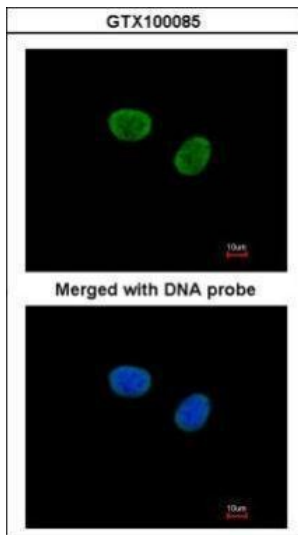
GTX100085_WB_M.jpg

Sample (30 ug of whole cell lysate)

A: NIH-3T3

7.5% SDS PAGE

GTX100085 diluted at 1:1000



GTX100085_IFA.jpg

Immunofluorescence analysis of paraformaldehyde-fixed HeLa, using RecQ1(GTX100085) antibody at 1:100 dilution.