



Catalog Number GTX100008 **Package:** 25 µl, 100 µl Proclin

Product Name LHR antibody [C3], C-term

Full Name luteinizing hormone/choriogonadotropin receptor

Synonyms FLJ41504 antibody, HHG antibody, LCGR antibody, LGR2 antibody, LH/CG-R antibody, LH/CGR antibody, LHR antibody, LHRHR antibody, LSH-R antibody, ULG5 antibody, LHCGR antibody, hypergonadotropic hypogonadism antibody, lutropin/choriogonadotropin receptor antibody, lutropin-choriogonadotropic hormone receptor antibody, luteinizing hormone/choriogonadotropin receptor antibody

Product Description Rabbit Polyclonal antibody to LHR (luteinizing hormone/choriogonadotropin receptor)

Background This gene encodes the receptor for both luteinizing hormone and choriogonadotropin. This receptor belongs to the G-protein coupled receptor 1 family, and its activity is mediated by G proteins which activate adenylate cyclase. Mutations in this gene result in disorders of male secondary sexual character development, including familial male precocious puberty, also known as testotoxicosis, hypogonadotropic hypogonadism, Leydig cell adenoma with precocious puberty, and male pseudohermaphroditism with Leydig cell hypoplasia. [provided by RefSeq]

Host Rabbit

Clonality Polyclonal

Isotype IgG

Immunogen Synthetic peptide corresponding to a region within amino acids 622 and 699 of LHR (Uniprot ID#P22888)

Antigen Species Human

Species Reactivity Human

Predicted Cross Reactivity species Rat

Predict Reactivity Note Rat (85%)

Applications IHC-P, WB

Application Note	Suggested dilution	Protocol	Reference
IHC (Formalin-fixed paraffin-embedded sections)	1:100-1:1000*		
Western blot	1:500-1:3000*		

Not tested in other applications.

*Optimal dilutions/concentrations should be determined by the researcher.

Positive Controls H1299

Predicted Target Size 79 kDa

Cellular Localization Cell membrane; Multi-pass membrane protein

Form Supplied Liquid

Purification Purified by antigen-affinity chromatography.

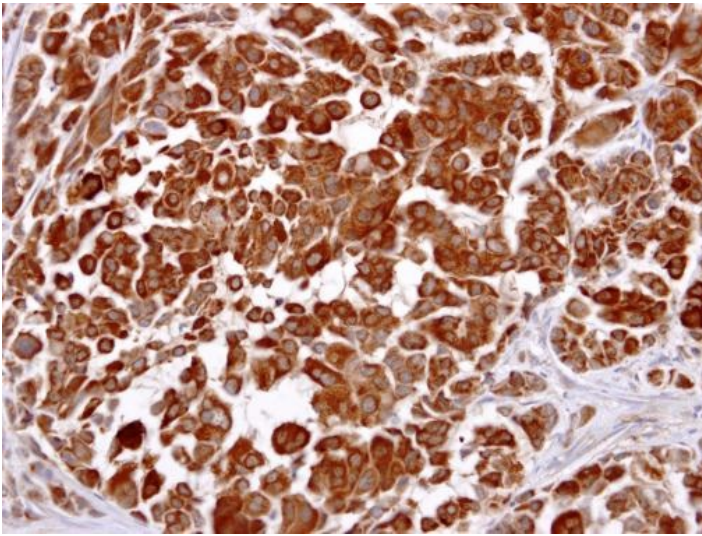
Concentration 1 mg/ml

Storage Buffer 1XPBS, 20% Glycerol (pH7). 0.025% proclin was added as a preservative.

Storage Instruction Keep as concentrated solution. Aliquot and store at -20°C or below. Avoid multiple freeze-thaw cycles.

Notes For *In vitro* laboratory use only. Not for any clinical, therapeutic, or diagnostic use in humans or animals. Not for animal or human consumption.

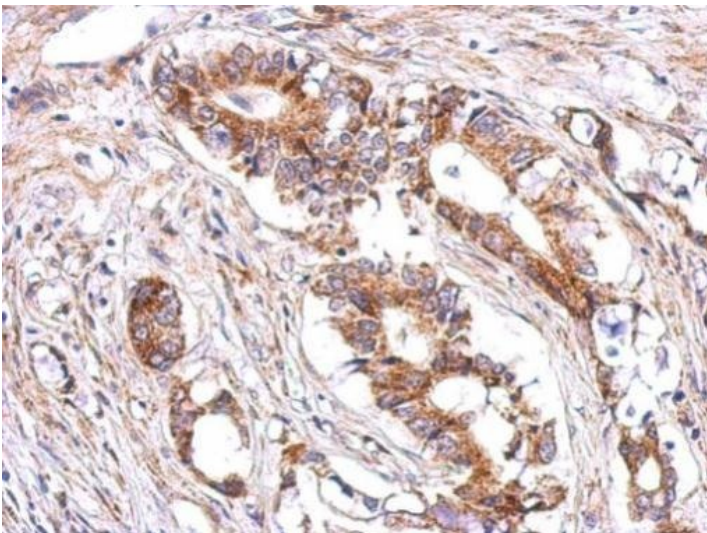
ResearchArea [Cancer](#) > [Type of cancer](#) > [Breast](#) > [Other](#)
[Cancer](#) > [Type of cancer](#) > [Ovarian](#)
[Cell Biology](#) > [Protein Trafficking](#)



GTX100008 LHR antibody [C3], C-term IHC-P Image

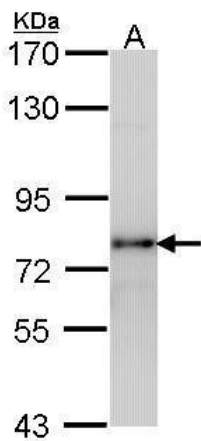
LHR antibody [C3], C-term detects LHR protein at cytosol on human lung carcinoma by immunohistochemical analysis.

Sample: LHR antibody [C3], C-term (GTX100008) dilution: 1:250.



GTX100008_39224_IHC.jpg

Immunohistochemical analysis of paraffin-embedded Gastric ca, using LHR(GTX100008) antibody at 1:500 dilution.



GTX100008_WB.jpg

Sample (30 ug of whole cell lysate)

A: H1299

7.5% SDS PAGE

LHR antibody
GTX100008 diluted at 1:1000