

# Transform & Grow<sup>™</sup> Bacterial Transformation Kit

*Easily and reliably prepare and transform cells*

- ✓ **No Heat Shock Required**
- ✓ **Transform-It<sup>™</sup> Solution is Ready-to-Use**
- ✓ **Transform Plasmids, Ligations, and Cosmids**
- ✓ **Store Competent Cells 10 Weeks or Longer**
- ✓ **More Reliable than “Do it Yourself” Methods**
- ✓ **Easy Procedure with Minimal Hands-On Time**

The novel Transform-It<sup>™</sup> Solution featured in the Transform & Grow<sup>™</sup> Bacterial Transformation Kit allows for simple and reliable preparation, storage and transformation of chemically competent *E. coli* host cells. Stable at ambient temperature, Transform-It<sup>™</sup> Solution is ready to use right out of the box: No defrosting, diluting, or preparation is required!

Liquid SUPER-COMP Media and Roll & Grow<sup>™</sup> Plating Beads make this 3-component kit an incredibly convenient way to economically prepare and store your own competent host cells for all your subcloning and plasmid transfer needs. The Transform & Grow<sup>™</sup> Bacterial Transformation Kit builds a bridge between the many varieties of Molecular Biology Certified<sup>™</sup> Bacterial Growth Media and the GENE CLEAN<sup>®</sup>-based plasmid purification kits also available from BIO 101<sup>®</sup> Systems.

## ***Minimal Hands-On Time with No Heat Shock***

The clear, comprehensive protocol offered with the Transform & Grow<sup>™</sup> Bacterial Transformation Kit makes it easy to determine how much cell culture to prepare. After growing cells to the recommended optical density, simply chill, centrifuge, and resuspend in cold Transform-It<sup>™</sup> Solution. Add super-coiled plasmid DNA, ligation reactions, or even cosmid DNA to aliquots of fresh or frozen competent cells. After a short series of incubations on ice and at ambient temperature, cells recover in SUPER-COMP Media prior to being easily dispersed onto selective agar plates using the Roll & Grow<sup>™</sup> Plating Beads provided in the kit.

Plasmid #	Plasmid Name	Size	Concentration Range (ng)	Transformation Efficiency
1	pUC18	2686bp	5 - 1000	4.1 - 7.1 × 10 <sup>6</sup>
2	pBKRSV	4.4kb	10 - 50	3.0 - 5.4 × 10 <sup>6</sup>
3	pGEX4T	4.696kb	5 - 10	1.2 - 1.6 × 10 <sup>6</sup>
4	PlasmidMA	~ 6.5kb	25	1.3 × 10 <sup>6</sup>
5	PlasmidMB	6-7kb	25	1.4 × 10 <sup>6</sup>
6	pCMV-Luciferase	9kb	25	4.2 - 6.7 × 10 <sup>6</sup>
7	PlasmidPLRC	12.8kb	300	1.5 × 10 <sup>6</sup>
8	CosmidMA	45kb	1000 - 1500	5.3 - 7.1 × 10 <sup>5</sup>
9	CosmidMB	45kb	500 - 1000	1.1 - 1.7 × 10 <sup>6</sup>
10	CosmidMC	45kb	1000	1.8 × 10 <sup>5</sup>
11	CosmidMD	45kb	1000	7.7 × 10 <sup>5</sup>

Table 1: Relationship between plasmid size, DNA concentration, and transformation efficiency

## Ordering Information & Related Products

Cat #	Product Name	Size
2150-200	Transform & Grow™ Bacterial Transformation Kit	50 preps
<b>Related Products*</b>		
2066-200	RapidPURE™ Plasmid Mini Kit	60 preps
2066-400	RapidPURE™ Plasmid Mini Kit	120 preps
2067-200	RapidPURE™ Plasmid Mini 96 Kit	96 preps
2067-400	RapidPURE™ Plasmid Mini 96 Kit	192 preps
2070-200	RPM® Kit	60 preps
2070-400	RPM® Kit	120 preps
2000-200	MiniPrep Express™ Matrix	1,250 preps
2005-200	RapidPURE™ Plasmid Midi Kit	25 preps
2005-400	RapidPURE™ Plasmid Midi Kit	75 preps
2076-200	RapidPURE™ Plasmid Maxi GF Kit	20 preps
2074-200	RapidPURE™ Plasmid Maxi GF Endo Free Kit	10 preps
3103-011	SUPER-COMP Media (Capsules)	100 Caps
3103-014	10x RbCl/CaCl Transformation Salts	150 ml
3031-012	SOC Medium (Powder)	227 g (0.5 lb)
3031-014	SOC Medium (Sterile Solution)	10 ml
3000-112	CIRCLEGROW® (Powder)	227 g (0.5 lb)
3000-165	CIRCLEGROW® (Pack)	10 x 0.5 L Pouches
3000-121	CIRCLEGROW® (Capsules)	250 Caps
3000-104	CIRCLEGROW® (Sterile Solution)	500 ml
3002-012	LB-Medium (Powder)	227 g (0.5 lb)
3002-065	LB-Medium (Pack)	10 x 0.5 L Pouches
3002-011	LB-Medium (Capsules)	227 g (0.5 lb)
3002-014	LB-Medium (Sterile Solution)	500 ml
5000-550	Roll & Grow™ Plating Beads, 2 Pack	2 Tubes

\*Hundreds of sizes and formulations of bacterial and yeast growth media are available. Please see our website, catalog, or inquire for details!

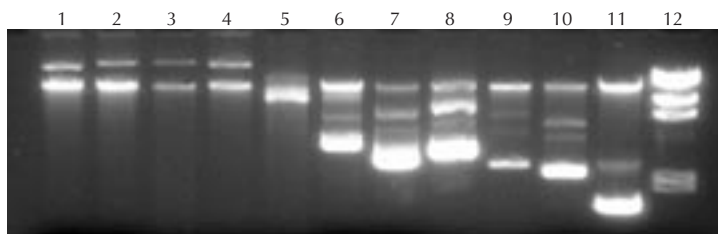


Figure 1: Uncut plasmid DNA on 1% non-denaturing agarose gel. Lanes 1-11: 1 µg uncut plasmid DNA prepared from plasmids 1-11 (See Table 1) using the RapidPURE™ Plasmid Mini Kit. Lane 12: Lambda Hind III Marker.

### NORTH AMERICA

Phone : 1-800-424-6101 or (760) 929-1700  
E-mail : order@qbiogene.com

### FRANCE

Phone : 03 88 67 54 25  
E-mail : frorders@qbiogene.com

### UK

Phone : 0800 328 8401  
E-mail : ukorders@qbiogene.com

### GERMANY

Phone : 0800 409 0580  
E-mail : bestellungen@qbiogene.com

[www.qbiogene.com](http://www.qbiogene.com)

