

**Ribonucleoside-diphosphate reductase, large subunit (RRM1). Rabbit Antigen Immunoaffinity Purified Polyclonal**  
Ribonucleoside-diphosphate reductase subunit M1, EC=1.17.4.1, Ribonucleoside-diphosphate reductase subunit M1, Ribonucleotide

**BACKGROUND**

This protein is one of two non-identical subunits that constitute ribonucleoside-diphosphate reductase, an enzyme essential for the production of deoxyribonucleotides prior to DNA synthesis in the S phase of dividing cells. The gene for RRM1 is, along with several others, located in the imprinted gene domain of 11p15.5, an important tumor-suppressor gene region. Alterations in this region are associated with the Beckwith-Wiedemann syndrome, Wilms tumor, rhabdomyosarcoma, adrenocortical carcinoma, and lung, ovarian, and breast cancer. RRM1 plays an important role in malignancies and disease that involve this region.

**ORDERING INFORMATION**

**CATALOG NUMBER**

X2735P

**SIZE**

100 µg

**FORM**

Affinity Purified

**HOST/CLONE**

Rabbit

**FORMULATION**

Provided as solution in phosphate buffered saline with 0.08% sodium azide

**CONCENTRATION**

See vial for concentration

**ISOTYPE**

Ig

**APPLICATIONS**

Immunohistochemistry, Western Blot, ELISA

**SPECIES REACTIVITY**

Human

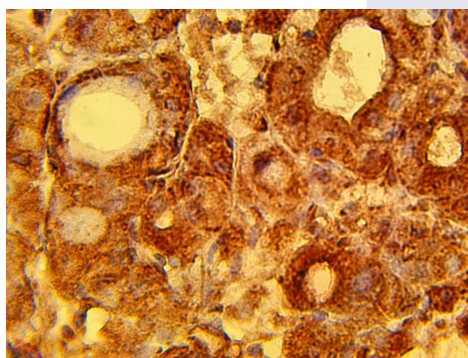
**ACCESSION NUMBER**

Human P23921

**IMMUNOGEN**

Synthetic peptide derived from the human RRM1 protein

Immunohistochemical staining of human liver tissue diagnosed with hepatocellular carcinoma using RRM1 antibody (Cat. No. X2735P) at 15 µg/ml and detected using anti-Rabbit HRP secondary antibody and visualized using DAB substrate and hematoxylin counterstain.



## **POSITIVE CONTROL/TISSUE EXPRESSION**

### **COMMENTS**

This antibody can be used for immunohistochemistry on formalin/paraffin sections (10-15  $\mu\text{g/ml}$ ). Optimal concentration should be evaluated by serial dilutions.

### **PURIFICATION**

Antigen Immunoaffinity Purification

### **SHIP CONDITIONS**

Ship at ambient temperature, freeze upon arrival

### **STORAGE CUSTOMER**

Product should be stored at  $-20^{\circ}\text{C}$ . Aliquot to avoid freeze/thaw cycles

### **STABILITY**

Products are stable for one year from purchase when stored properly

## **REFERENCES**

### **PRODUCT SPECIFIC REFERENCES**