

ERCC1 (DNA excision repair protein). Rabbit Antigen Immunoaffinity Purified Polyclonal
Excision Repair Cross Complementing protein-1; Nucleotide Excision Repair Protein

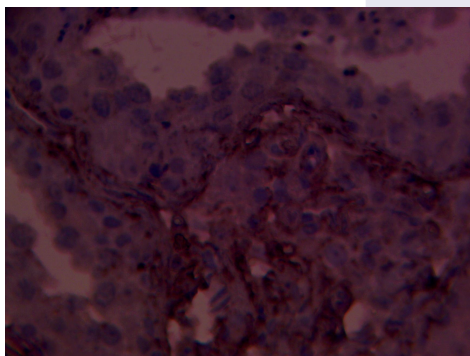
BACKGROUND

Recognizes a protein of 33-36kDa, identified as the Excision Repair Cross Complementing (ERCC1). The mammalian ERCC1-encoded polypeptide is required for nucleotide excision repair (NER) of damaged DNA and is homologous to *Saccharomyces cerevisiae* RAD10, which functions in repair and mitotic intrachromosomal recombination. The structure-specific ERCC1/XPF endonuclease complex is implicated in the repair of two distinct types of lesions in DNA: NER for UV-induced lesions and bulky chemical adducts; and recombination repair of the very genotoxic interstrand cross-links. NER mechanism involves dual incisions on both sides of the damage catalyzed by two nucleases. In mammalian cells XPG cleaves 3' of the DNA lesion while the ERCC1-XPF complex makes the 5' incision. Elevated levels of ERCC1 have also been reported in Cisplatin-resistant cells.

IMMUNOGEN

Synthetic peptide derived from human ERCC1 protein

Immunohistochemical staining of normal human testis tissue using ERCC1 antibody (Cat. No. X2734P) at 10 µg/ml and detected using anti-Rabbit HRP secondary antibody and visualized using DAB substrate and hematoxylin counterstain.



ORDERING INFORMATION

CATALOG NUMBER
X2734P

SIZE
100 µg

FORM
Affinity Purified

HOST/CLONE
Rabbit

FORMULATION
Provided as solution in phosphate buffered saline with 0.08% sodium azide

CONCENTRATION
See vial for concentration

ISOTYPE
Ig

APPLICATIONS
Western Blot, Immunohistochemistry (paraffin-embedded)

SPECIES REACTIVITY
Human

ACCESSION NUMBER
Human P07992

POSITIVE CONTROL/TISSUE EXPRESSION

A431 or HeLa lysates, human tonsil tissue

COMMENTS

This antibody can be used for Western blotting (5-10 µg/ml) and immunohistochemistry on formalin/paraffin sections (5-10 µg/ml). Optimal concentration should be evaluated by serial dilutions.

PURIFICATION

Antigen Immunoaffinity Purification

SHIP CONDITIONS

Ship at ambient temperature, freeze upon arrival

STORAGE CUSTOMER

Product should be stored at -20°C. Aliquot to avoid freeze/thaw cycles

STABILITY

Products are stable for one year from purchase when stored properly

REFERENCES

1. Hayashi T, et al: ERCC1 mutations in UV-sensitive Chinese hamster ovary (CHO) cell lines. *Mutat Res* 1998;407(3):269-276.
2. de Laat WL, et al: DNA structural elements required for ERCC1-XPF endonuclease activity. *J Biol Chem* 1998;273(14):7835-7842.
3. de Laat WL, et al: Mapping of interaction domains between human repair proteins ERCC1 and XPF. *Nucleic Acids Res* 1998 Sep 15;26(18):4146-4152.
4. Lee-Kwon W, et al: Involvement of the Ras/extracellular signal-regulated kinase signalling pathway in the regulation of ERCC-1 mRNA levels by insulin. *Biochem J* 1998 Apr 15;331 (Pt 2):591-597.
5. Lee-Kwon W, et al: Nucleotide excision repair is not required for the antiapoptotic function of insulin-like growth factor 1. *Exp Cell Res* 1998;241(2):458-466.
6. Li Q, Bostick-Bruton F, Reed E: Effect of interleukin-1 alpha and tumour necrosis factor- alpha on cisplatin-induced ERCC-1 mRNA expression in a human ovarian carcinoma cell line. *Anticancer Res* 1998;18(4A):2283-2287.
7. Li Q, Ding L, Yu JJ, Mu C, Tsang B, Bostick- Bruton F, Reed E: Cisplatin and phorbol ester independently induce ERCC-1 protein in human ovarian carcinoma cells. *Int J Oncol* 1998;13(5):987-992.
8. Lin YW, Kubota M, Koishi S, Sawada M, Usami I, Watanabe K, Akiyama Y: Analysis of mutations at the DNA repair genes in acute childhood leukaemia. *Br J Haematol* 1998;13(4):357-365.
9. Reed E: Platinum-DNA adduct, nucleotide excision repair and platinum based anti-cancer chemotherapy. *Cancer Treat Rev* 1998;24(5):331-344.
10. Rolig RL, Lowery MP, Adair GM, Nairn RS: Characterization and analysis of Chinese hamster ovary cell ERCC1 mutant alleles. *Mutagenesis* 1998;13(4):357-365.
11. Li Q, Tsang B, Bostick-Bruton F, Reed E: Modulation of excision repair cross complementation group 1 (ERCC-1) mRNA expression by pharmacological agents in human ovarian carcinoma cells. *Biochem Pharmacol* 1999;57(4):347-353.
12. Miura M, et al. *Exp Cell Res* 1996;226:126-132.

PRODUCT SPECIFIC REFERENCES