

LRRK2. Rabbit Antigen Immunoaffinity Purified Polyclonal
Leucine-rich repeat serine/threonine-protein kinase 2; Dardarin

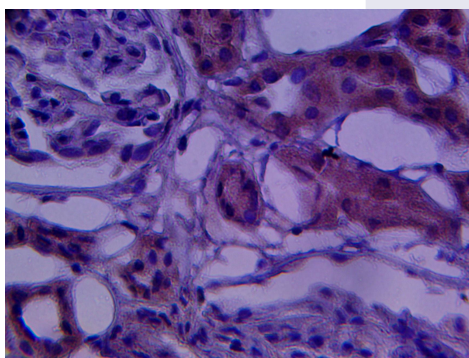
BACKGROUND

LRRK2 is a member of the protein kinase superfamily. It contains 12 LRR's (leucine-rich repeats). It may play a role in the phosphorylation of proteins central to Parkinson disease. Phosphorylates PRDX3. May also have GTPase activity. Interacts with PARK2. Interacts with PRDX3. Expressed throughout the adult brain, but at a lower level than in heart and liver. Also expressed in placenta, lung, skeletal muscle, kidney and pancreas. In the brain, expressed in the cerebellum, cerebral cortex, medulla, spinal cord occipital pole, frontal lobe, temporal lobe and putamen. Expression is particularly high in brain dopaminergic areas. Defects in LRRK2 are the cause of Parkinson disease type 8 (PARK8). A slowly progressive neurodegenerative disorder characterized by bradykinesia, rigidity, resting tremor, postural instability, neuronal loss in the substantia nigra, and the presence of neurofibrillary MAPT (tau)-positive and Lewy bodies in some patients.

IMMUNOGEN

Synthetic peptide derived from the human LRRK2 protein

Immunohistochemical staining of normal human kidney tissue using LRRK2 antibody (Cat. No. X2733P) at 10 µg/ml and detected using anti-Rabbit HRP secondary antibody and visualized using DAB substrate and hematoxylin counterstain.



ORDERING INFORMATION

CATALOG NUMBER

X2733P

SIZE

100 µg

FORM

Affinity Purified

HOST/CLONE

Rabbit

FORMULATION

Provided as solution in phosphate buffered saline with 0.08% sodium azide

CONCENTRATION

See vial for concentration

ISOTYPE

Ig

APPLICATIONS

Immunohistochemistry

SPECIES REACTIVITY

Human

ACCESSION NUMBER

Human Q5S007

POSITIVE CONTROL/TISSUE EXPRESSION

Human kidney tissue

COMMENTS

Antibody can be used for immunohistochemistry (5-10 μ g/ml). Optimal concentration should be evaluated by serial dilutions.

PURIFICATION

Antigen Immunoaffinity Purification

SHIP CONDITIONS

Ship at ambient temperature, freeze upon arrival

STORAGE CUSTOMER

Product should be stored at -20°C. Aliquot to avoid freeze/thaw cycles

STABILITY

Products are stable for one year from purchase when stored properly

REFERENCES

1. Glasson, B.I., et al. 'Biochemical and pathological characterization of Lrrk2.' Ann Neurol. 2006, 59, 315-322
2. Miklossy, J., et al. 'LRRK2 expression in normal and pathologic human brain and in human cell lines.' J. Neuropathol Exp. Neurol. 2006, 65, 953-963
3. Alegre-Abarrategui, J., et al. 'LRRK2 is a component of granular alpha-synuclein pathology in the brainstem of Parkinson's disease.' 2008, 34, 272-283

PRODUCT SPECIFIC REFERENCES