



Roundabout homolog 1, ROBO1. Rabbit Polyclonal Antibody
H-Robo-1, Deleted in U twenty twenty

BACKGROUND

Receptor for SLIT1 and SLIT2 which are thought to act as molecular guidance cue in cellular migration, including axonal navigation at the ventral midline of the neural tube and projection of axons to different regions during neuronal development. In axon growth cones, the silencing of the attractive effect of NTN1 by SLIT2 may require the formation of a ROBO1-DCC complex. May be required for lung development. Defects in ROBO1 may be a cause of breast and lung cancer. ROBO1 maps within a region of overlapping homozygous deletions characterized in both small cell lung cancer cell lines (SCLC) and in a breast cancer cell line.

ORDERING INFORMATION

CATALOG NUMBER
X2334P

SIZE
100 μ g
FORM
Unconjugated

HOST/CLONE
Rabbit

FORMULATION
Provided as solution in phosphate buffered saline with 0.08% sodium azide

CONCENTRATION
See vial for concentration

ISOTYPE

APPLICATIONS
Western Blot

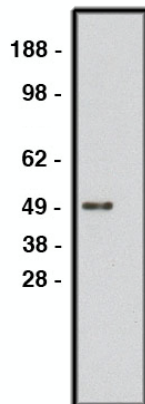
SPECIES REACTIVITY
Human

ACCESSION NUMBER
Human Q9Y6N7

IMMUNOGEN

Synthetic peptide derived from human ROBO1 protein

Western blot using ROBO1 antibody (Cat. No. X2334P) on human brain lysate (Cat. No. X1633C). Lysate used at 15 μ g/lane. Antibody used at 10 μ g/ml. Secondary antibody, mouse anti-rabbit HRP (Cat. No. X1207M), used at 1:50k.



POSITIVE CONTROL/TISSUE EXPRESSION

Widely expressed, with exception of kidney.

COMMENTS

Antibody can be used for Western blotting (1-5 mg/ml). Optimal concentration should be evaluated by serial dilutions.

PURIFICATION

Ammonium Sulfate Precipitation

SHIP CONDITIONS

Ship at ambient temperature, freeze upon arrival

STORAGE CUSTOMER

Product should be stored at -20°C. Aliquot to avoid freeze/thaw cycles

STABILITY

Products are stable for one year from purchase when stored properly

REFERENCES

1. Brose K., Bland K.S., Wang K.H., Arnott D., Henzel W., Goodman C.S., Tessier-Lavigne M., Kidd T.; Slit proteins bind Robo receptors and have an evolutionarily conserved role in repulsive axon guidance.; Cell 96:795-806(1999).
2. Dallo A., Forgacs E., Martinez A., Sekido Y., Walker R., Kishida T., Rabbitts P., Maher E.R., Minna J.D., Latif F.; Tumour specific promoter region methylation of the human homologue of the Drosophila Roundabout gene DUTT1 (ROBO1) in human cancers.; Oncogene 21:3020-3028(2002).

PRODUCT SPECIFIC REFERENCES