

Bi-Test™ CD3 FITC - CD4 PE

Product: Anti-human CD3 FITC T cell Monoclonal Antibody and CD4 PE Helper/Inducer T cell Monoclonal Antibody.

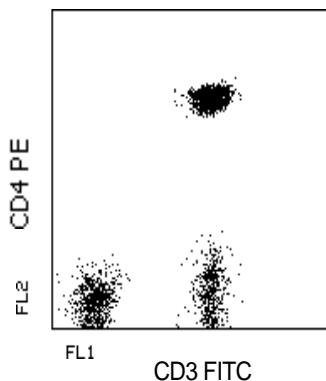
Description: The CD3 epitope is expressed on the epsilon chain of the CD3/T cell antigen receptor (TcR) complex. CD3 is present on 65-85% of thymocytes and has a mitogenic effect on peripheral blood T cells. Identification of human T cells expressing the 22-28,000 M.W. surface antigen. Identification of CD4 human helper/inducer T cells expressing the 60,000 M.W. surface antigen (HLA class II reactive). CD4 is present in low density on monocytes.

Isotypes: Mouse IgG-1 kappa (FITC) and Mouse IgG-1 kappa (PE)

Clones: M2AB (CD3 FITC) and 7E14 (CD4 PE)

Applications: Monitoring of T cells subsets in peripheral blood; Analysis of T cell subsets involved in helper/inducer functions; Characterization of subtypes of T cell leukemia's and lymphomas; Studies of AIDS/HIV virus infection; Analysis of CD3 complex related to the T cell antigen receptor

Use: PBMC: Add 10 µl of MAB/10⁶ PBMC in 100 µl PBS. Mix gently and incubate for 15 minutes at 20° to 8°C. Wash twice with PBS and analyze or fix with 0.5% v/v of paraformaldehyde in PBS and analyze. WHOLE BLOOD: Add 10 µl of MAB/100 µl of whole blood. Mix gently and incubate for 15 minutes at room temperature 20°C. Lyse the whole blood. Wash once with PBS and analyze or fix with 0.5% v/v of paraformaldehyde in PBS and analyze. See instrument manufacturer's instructions for Lysed Whole Blood and Immunofluorescence analysis with a flow cytometer or microscope.



Legend: Peripheral
Blood Lymphocytes
Stained with Exalpa's
Bi-Test CD3 FITC-CD4
PE Two Color Staining
Kit.

Gated Lymphocytes

Storage: Antibodies are supplied in PBS, 0.08% sodium azide and 0.2% protein carrier for FITC and PE. Antibodies should be stored at 4-8°C. Monoclonal antibodies should not be frozen. Reagents are stable for the period shown on the vial label when stored properly.

Ordering Information:	Form	Vial Size	Catalog #
	Bi-Test™	50 Test	B034s
	Bi-Test™	100 Test	B034

For research use only. Not for use in human diagnostics or therapeutics.

Exalpa Biologicals, Inc., 86 Rosedale Rd. Watertown, MA 02472
Tel: 800.395.1137 or 617.924.3400, Fax: 866.924.5100 or 617.924.5100, Web: www.exalpa.com

REFERENCES:

1. Thymus Dependent Membrane Antigens in Man: Inhibition of Cell-Mediated Lympholysis by Monoclonal Antibodies to the TH-2 Antigen. Evans,R.L., Wall,D.W., Platsoucas,C.D., Siegal,F.P., Fikrig,S.M., Testa,C.M, and Good,R.A. Proc. Nat. Acad. Sci. 78,544,1981
2. Novel Immunoregulatory Functions of Phenotypically Distinct Subpopulations of CD4+ cells in the Human Neonate. Clement,L.T., Vink,P.E., Bradley,G.E. J. Immunology 145(1):102-8,1990
3. Antigen Presentation by the CD4 Positive Monocyte Subset. Szabo,G., Miller,C.L., Kodys,K., J. Leukoc. Biol. 47(2): 111-20,1990
4. Human Immunodeficiency Virus Infection is Efficiently Mediated by a Glycolipid-Anchored form of CD4. Diamond,D.C., Finberg,R., Chaudhuri,S., Sleckman,B.P., Burakoff,S.J., Proc. Natl. Acad. Sci. 87(13):5001-5,1990
5. Development Regulation of the Intrathymic T cell Precursor Population. Adkins,B., J. Immunol. 146(5):1387-93,1991
6. Knowles RW. Immunochemical analysis of the T cell-specific antigens. In : Reinhert EL, Haynes BF, Nadl LM and Bernstein ID. eds. Leukocyte Typing II, Human T Lymphocytes. New York, NY: Springer-Verlag; 1986:259
7. Kurre R. Cluster Report:CD3. In:Knapp W, Dorken B, Gilks WR, Reiber EP, Schmidt RE, Stein H, and von dem Borne AEG Kr, eds. Leukocyte Typing IV, White cell Differentiation Antigens. Oxford, England: Oxford Press 1989:293
8. Signal transduction via CD4,CD8 and CD28 in mature and immature thymocytes. Implications for thymic selection. Turka LA, Linsley PS, Paine R 3d, Schieven GI, Thompson GB, Ledbetter JA, J. Immunol. 1991 Mar :146(5): 1428-36
9. T cell receptor/CD3-signaling induces death by apoptosis in human T cell receptor gamma delta + Tcells. Janssen O, Wesselborg S, Heckl-Ostreicher B, Pechhold K, Bender A, Schondelmaier S, Moldenhauer G, Kabelitz D I Immunol. 1991 Jan146(1):35-9
10. Clonal analysis of human CD4-CD8-CD3- thymocytes highly purified from postnatal thymus Hori T, Spits H J. Immunol. 1991 Apr 146(7):2116-21
11. Molecular cloning of the CD3 zeta subunit identifies a CD3 zeta-related product in thymus-derived cells Jin YJ, Claton LK, Howard FD, Koyasu S, Sieh M, Steinbrich R, Tarr GE, Reinherz EL. Proc Natl Acad Sci usa 1990 Ma: 87(9):3319-2

For research use only. Not for use in human diagnostics or therapeutics.

Exalpa Biologicals, Inc., 86 Rosedale Rd. Watertown, MA 02472
Tel: 800.395.1137 or 617.924.3400, Fax: 866.924.5100 or 617.924.5100, Web:www.exalpa.com