



**CD11b FITC. Mouse Single-Color Reagent F6.2**

**COMMENTS**

(Mac-1), CD11b/CD18 complex is a leukocyte adhesion receptor to intercellular adhesion molecules (ICAM's). CR3 alpha chain (M.W. 165,000) is on virtually all peripheral blood neutrophils, eosinophils, monocytes and approximately 30% of peripheral blood lymphocytes.

**CONCENTRATION**

See vial for concentration

**SHIP CONDITIONS**

Room Temperature

**STORAGE CUSTOMER**

Product should be stored at 4-8°C. DO NOT FREEZE

**STABILITY**

Reagents are stable for the period shown on the vial label when stored properly

**Use**

**PBMC:** Add 10 µl of MAB/10<sup>6</sup> PBMC in 100 µl PBS. Mix gently and incubate for 15 minutes at 2 to 8° C. Wash twice with PBS and analyze or fix with 0.5% v/v of paraformaldehyde in PBS and analyze. **WHOLE BLOOD:** Add 10 µl of MAB/100 µl of whole blood. Mix gently and incubate for 15 minutes at room temperature (20°C). Lyse the whole blood. Wash once with PBS and analyze or fix with 0.5% v/v of paraformaldehyde in PBS and analyze. See instrument manufacturer's instructions for Lysed Whole Blood and Immunofluorescence analysis with a flow cytometer or microscope.

**ORDERING INFORMATION**

**CATALOG NUMBER**

11B2

**SIZE**

100 Tests

**FORM**

FITC

**HOST/CLONE**

Mouse Clone F6.2

**FORMULATION**

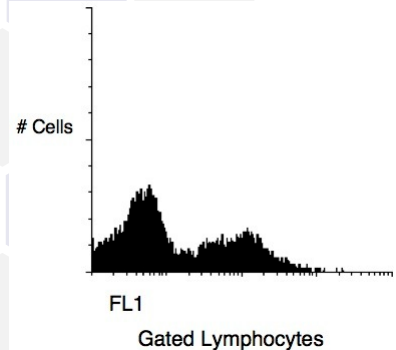
Provided as sterile filtered solution in phosphate buffered saline with 0.08% sodium azide and 0.2% carrier protein

**ISOTYPE**

IgG2a

**APPLICATIONS**

Flow Cytometry



Peripheral blood lymphocytes stained with Exalalpha's CD11b PE Conjugated Antibody (Cat. No. 11B4).