



HLA-DR FITC. Mouse Single-Color Reagent 423L

COMMENTS

HLA-DR is used for the identification of human B cell and T cell subsets associated with approximately 10% of peripheral blood lymphocytes 28-34,000 M.W. surface antigen, and is present in low density on monocytes and macrophages.

CONCENTRATION

See vial for concentration

SHIP CONDITIONS

room temperature

STORAGE CUSTOMER

Product should be stored at 4-8°C. DO NOT FREEZE

STABILITY

Reagents are stable for the period shown on the vial label when stored properly

Use

PBMC: Add 10 µl of MAB/10⁶ PBMC in 100 µl PBS. Mix gently and incubate for 15 minutes at 2° to 8°C. Wash twice with PBS and analyze or fix with 0.5% v/v of paraformaldehyde in PBS and analyze.

WHOLE BLOOD: Add 10 µl of MAB/100 µl of whole blood. Mix gently and incubate for 15 minutes at room temperature 20°C. Lyse the whole blood. Wash once with PBS and analyze or fix with 0.5% v/v of paraformaldehyde in PBS and analyze. See instrument manufacturer's instructions for Lysed Whole Blood and Immunofluorescence analysis with a flow cytometer or microscope.

ORDERING INFORMATION

CATALOG NUMBER

0DR2

SIZE

100 Tests

FORM

FITC

HOST/CLONE

Mouse Clone 423L

FORMULATION

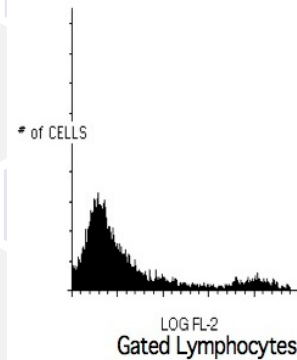
Provided as sterile filtered solution in phosphate buffered saline with 0.08% sodium azide and 0.2% carrier protein

ISOTYPE

IgG2a

APPLICATIONS

Flow Cytometry



Peripheral blood lymphocytes stained with Exalalpha's HLA-DR PE Conjugated Antibody (Cat. No. 0DR4).