



CD8 FITC - HLADR PE. Mouse Bi-Test™ Reagents (FITC/RPE)

COMMENTS

Identification of human T cells suppressor/cytotoxic expressing the 32 and 43,000 M.W. n. Identification of human B cell and T cell subsets associated with approximately 10% of peripheral blood lymphocytes 28 -34,000 M.W. surface antigen, also low density on monocytes and macrophages.

CONCENTRATION

See vial for concentration

SHIP CONDITIONS

Room Temperature

STORAGE CUSTOMER

Product should be stored at 4-8°C. DO NOT FREEZE

STABILITY

Reagents are stable for the period shown on the vial label when stored properly

Use

PBMC: Add 10 µl of MAB/10⁶ PBMC in 100 µl PBS. Mix gently and incubate for 15 minutes at 2° to 8°C. Wash twice with PBS and analyze or fix with 0.5% v/v of paraformaldehyde in PBS and analyze. **WHOLE BLOOD:** Add 10 µl of MAB/100 µl of whole blood. Mix gently and incubate for 15 minutes at room temperature 20°C. Lyse the whole blood. Wash once with PBS and analyze or fix with 0.5% v/v of paraformaldehyde in PBS and analyze. See instrument manufacturers instructions for Lysed Whole Blood and Immunofluorescence analysis with a flow cytometer or microscope.

ORDERING INFORMATION

CATALOG NUMBER

08DR

SIZE

100 Tests

FORM

Bi-Test (FITC/RPE) Reagent

HOST/CLONE

Mouse

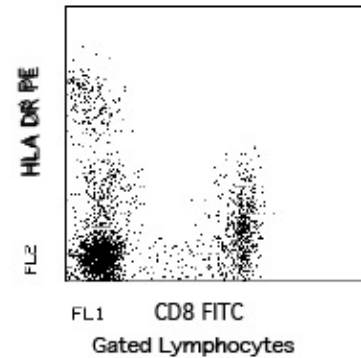
FORMULATION

Provided as sterile filtered solution in phosphate buffered saline with 0.08% sodium azide and 0.2% carrier protein

ISOTYPE

APPLICATIONS

Flow Cytometry



Peripheral blood lymphocytes stained with Exalalpha's CD8 FITC-HLADR PE Bi-Test Reagent (Cat. No. 08DR)