



**CD56 FITC. Mouse Single-Color Reagent C5.9**

**COMMENTS**

CD56, M.W. 150,000, is expressed on approximately 10-25% of human peripheral blood lymphocytes. CD56 (NKH-1) is expressed on human peripheral blood natural killer cells, representing a pan NK-cell antigen. Expressed on non-MHC-restricted cytotoxic T cells.

**CONCENTRATION**

N/A

**SHIP CONDITIONS**

Room Temperature

**STORAGE CUSTOMER**

Product should be stored at 4-8°C. DO NOT FREEZE

**STABILITY**

Reagents are stable for the period shown on the vial label when stored properly

**USE**

**PBMC:** Add 10 µl of MAB/10<sup>6</sup> PBMC in 100 µl PBS. Mix gently and incubate for 15 minutes at 2° to 8° C. Wash twice with PBS and analyze or fix with 0.5% v/v of paraformaldehyde in PBS and analyze. **WHOLE BLOOD:** Add 10 µl of MAB/100 µl of whole blood. Mix gently and incubate for 15 minutes at room temperature 20°C. Lyse the whole blood. Wash once with PBS and analyze or fix with 0.5% v/v of paraformaldehyde in PBS and analyze. See instrument manufacturer's instructions for Lysed Whole Blood and Immunofluorescence analysis with a flow cytometer or microscope.

**ORDERING INFORMATION**

**CATALOG NUMBER**

0562

**SIZE**

100 Tests

**FORM**

FITC

**HOST/CLONE**

Mouse Clone C5.9

**FORMULATION**

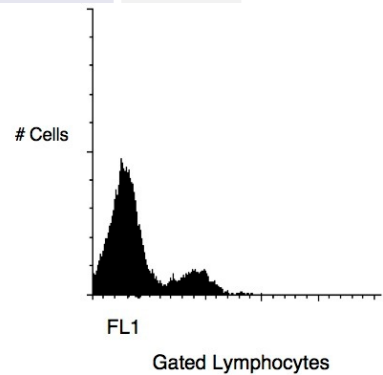
Provided as sterile filtered solution in phosphate buffered saline with 0.08% sodium azide and 0.2% carrier protein

**ISOTYPE**

IgG2b

**APPLICATIONS**

Flow Cytometry



Peripheral blood lymphocytes stained with Exalphi's CD56 PE Conjugated Antibody (Cat. No. 0564).