



**CD5 FITC - CD19 PE. Mouse Bi-Test™ Reagents (FITC/RPE)**

**COMMENTS**

Identification of CD5 human T cells expressing the 67,000 M.W. surface antigen, 85% peripheral blood lymphocytes that form rosettes with sheep red blood cells (E+) and a small subset of B cells. Identification of CD19 PE human B cells associated approximately 10% of peripheral blood lymphocytes expressing the 95,000 M.W. surface antigen.

**CONCENTRATION**

See vial for concentration

**SHIP CONDITIONS**

Room Temperature

**STORAGE CUSTOMER**

Product should be stored at 4-8°C. DO NOT FREEZE

**STABILITY**

Reagents are stable for the period shown on the vial label when stored properly

**Use**

**PBMC:** Add 10 µl of MAB/10<sup>6</sup> PBMC in 100 µl PBS. Mix gently and incubate for 15 minutes at 2° to 8°C. Wash twice with PBS and analyze or fix with 0.5% v/v of paraformaldehyde in PBS and analyze. **WHOLE BLOOD:** Add 10 µl of MAB/100 µl of whole blood. Mix gently and incubate for 15 minutes at room temperature 20°C. Lyse the whole blood. Wash once with PBS and analyze or fix with 0.5% v/v of paraformaldehyde in PBS and analyze. See instrument manufacturer's instructions for Lysed Whole Blood and Immunofluorescence analysis with a flow cytometer or microscope.

**ORDERING INFORMATION**

**CATALOG NUMBER**

0519

**SIZE**

100 Tests

**FORM**

Bi-Test (FITC/RPE) Reagent

**HOST/CLONE**

Mouse

**FORMULATION**

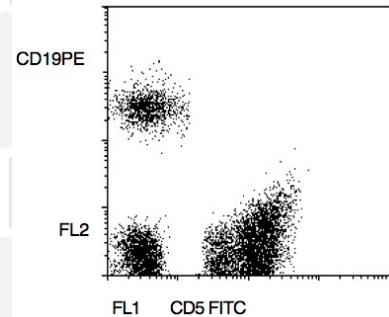
Provided as sterile filtered solution in phosphate buffered saline with 0.08% sodium azide and 0.2% carrier protein

**ISOTYPE**

IgG2a (F)/IgG1 (PE)

**APPLICATIONS**

Flow Cytometry



Peripheral blood lymphocytes stained with Exalpha's CD5 FITC-CD19 PE Bi-Test Reagent (Cat. No. 0519).