



**CD19 FITC. Mouse Single-Color Reagent 1G9**

**COMMENTS**

Identification of human B cells associated approximately with 10% of peripheral blood lymphocytes, 95,000 M.W. surface antigen.

**CONCENTRATION**

See vial for concentration

**SHIP CONDITIONS**

Room Temperature

**STORAGE CUSTOMER**

Product should be stored at 4-8°C. DO NOT FREEZE

**STABILITY**

Reagents are stable for the period shown on the vial label when stored properly

**USE**

**PBMC:** Add 10 µl of MAB/10<sup>6</sup> PBMC in 100 µl PBS. Mix gently and incubate for 15 minutes at 2 to 8° C. Wash twice with PBS and analyze or fix with 0.5% v/v of paraformaldehyde in PBS and analyze. **WHOLE BLOOD:** Add 10 µl of MAB/100 µl of whole blood. Mix gently and incubate for 15 minutes at room temperature 20° C. Lyse the whole blood. Wash once with PBS and analyze or fix with 0.5% v/v of paraformaldehyde in PBS and analyze. See instrument manufacturer's instructions for Lysed Whole Blood and Immunofluorescence analysis with a flow cytometer or microscope. **ALLOPHYCOCYANIN: (APC)** conjugates are analyzed in multi-color flow cytometry with instruments equipped with a second laser and proper filters. Laser excitation is at 633 nm with a Helium Neon (HeNe) laser or a 600-640 nm (633 nm) range for a Dye laser. Peak fluorescence emission is at 660 nm. **RPE-Cy-5+:** Excites at 488nm and emits at 670nm. Store protected from light.

**ORDERING INFORMATION**

**CATALOG NUMBER**

0192

**SIZE**

100 Tests

**FORM**

FITC

**HOST/CLONE**

Mouse Clone 1G9

**FORMULATION**

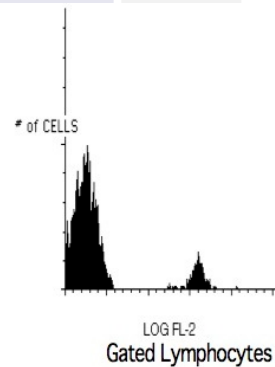
Provided as sterile filtered solution in phosphate buffered saline with 0.08% sodium azide and 0.2% carrier protein

**ISOTYPE**

IgG1

**APPLICATIONS**

Flow Cytometry



Peripheral blood lymphocytes stained with Exalphi's CD19 PE Conjugated Antibody (Cat. No. 0194).