



CD19. Mouse Single-Color Reagent 1G9

COMMENTS

Identification of human B cells associated approximately with 10% of peripheral blood lymphocytes, 95,000 M.W. surface antigen.

CONCENTRATION

See vial for concentration

SHIP CONDITIONS

Room Temperature

STORAGE CUSTOMER

Product should be stored at -20°C. Aliquot to avoid freeze/thaw cycles

STABILITY

Products are stable for one year from purchase when stored properly

USE

PBMC: Add 10 µl of MAB/10⁶ PBMC in 100 µl PBS. Mix gently and incubate for 15 minutes at 2 to 8° C. Wash twice with PBS and analyze or fix with 0.5% v/v of paraformaldehyde in PBS and analyze. **WHOLE BLOOD:** Add 10 µl of MAB/100 µl of whole blood. Mix gently and incubate for 15 minutes at room temperature 20° C. Lyse the whole blood. Wash once with PBS and analyze or fix with 0.5% v/v of paraformaldehyde in PBS and analyze. See instrument manufacturer's instructions for Lysed Whole Blood and Immunofluorescence analysis with a flow cytometer or microscope. **ALLOPHYCOCYANIN: (APC)** conjugates are analyzed in multi-color flow cytometry with instruments equipped with a second laser and proper filters. Laser excitation is at 633 nm with a Helium Neon (HeNe) laser or a 600-640 nm (633 nm) range for a Dye laser. Peak fluorescence emission is at 660 nm. **RPE-Cy-5+:** Excites at 488nm and emits at 670nm. Store protected from light.

ORDERING INFORMATION

CATALOG NUMBER

0191

SIZE

100 µg

FORM

Unconjugated

HOST/CLONE

Mouse Clone 1G9

FORMULATION

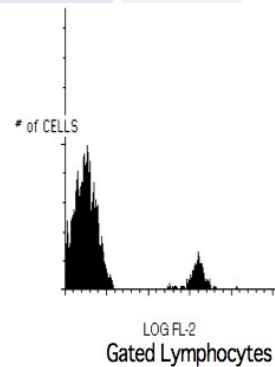
Provided as solution in phosphate buffered saline with 0.08% sodium azide

ISOTYPE

IgG1

APPLICATIONS

Flow Cytometry



Peripheral blood lymphocytes stained with Exalphi's CD19 PE Conjugated Antibody (Cat. No. 0194).