



**CD18 PE. Mouse Single-Color Reagent 3EB**

**COMMENTS**

LFA-1 beta is a leukocyte adhesion receptor to (ICAM's) intercellular adhesion molecules. LFA-1 beta is on virtually all peripheral blood lymphocytes, 95,000 M.W. surface antigen.

**CONCENTRATION**

See vial for concentration

**SHIP CONDITIONS**

Room Temperature

**STORAGE CUSTOMER**

Product should be stored at 4-8°C. DO NOT FREEZE

**STABILITY**

Reagents are stable for the period shown on the vial label when stored properly

**USE**

**PBMC:** Add 10 µl of MAB/10<sup>6</sup> PBMC in 100 µl PBS. Mix gently and incubate for 15 minutes at 2° to 8°C. Wash twice with PBS and analyze or fix with 0.5% v/v of paraformaldehyde in PBS and analyze. **WHOLE BLOOD:** Add 10 µl of MAB/100 µl of whole blood. Mix gently and incubate for 15 minutes at room temperature 20°C. Lyse the whole blood. Wash once with PBS and analyze or fix with 0.5% v/v of paraformaldehyde in PBS and analyze. See instrument manufacturers instructions for Lysed Whole Blood and Immunofluorescence analysis with a flow cytometer or microscope.

**ORDERING INFORMATION**

**CATALOG NUMBER**

0184

**SIZE**

100 Tests

**FORM**

RPE

**HOST/CLONE**

Mouse Clone 3EB

**FORMULATION**

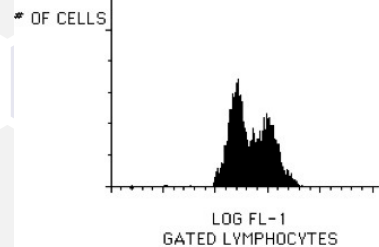
Provided as sterile filtered solution in phosphate buffered saline with 0.08% sodium azide and 0.2% carrier protein

**ISOTYPE**

IgG1

**APPLICATIONS**

Flow Cytometry



Peripheral blood lymphocytes stained with Exalphi's CD18 PE Conjugated Antibody (Cat. No. 0184).