

CD5 FITC. Mouse Single-Color Reagent M28623

COMMENTS

Identification of human helper/inducer T cells expressing the 67,000 M.W. surface antigen, 85% peripheral blood lymphocytes that form rosettes with sheep red blood cells (E+), and a small subset of B cells.

CONCENTRATION

See vial for concentration

SHIP CONDITIONS

Room Temperature

STORAGE CUSTOMER

Product should be stored at 4-8°C. DO NOT FREEZE

STABILITY

Reagents are stable for the period shown on the vial label when stored properly

Use

PBMC: Add 10 µl of MAB/106 PBMC in 100 µl PBS. Mix gently and incubate for 15 minutes at 20 to 80°C. Wash twice with PBS and analyze or fix with 0.5% v/v of paraformaldehyde in PBS and analyze. **WHOLE BLOOD:** Add 10 µl of MAB/100 µl of whole blood. Mix gently and incubate for 15 minutes at room temperature 20°C. Lyse the whole blood. Wash once with PBS and analyze or fix with 0.5% v/v of paraformaldehyde in PBS and analyze. See instrument manufacturer's instructions for Lysed Whole Blood and Immunofluorescence analysis with a flow cytometer or microscope.

ORDERING INFORMATION

CATALOG NUMBER

0052

SIZE

100 Tests

FORM

FITC

HOST/CLONE

Mouse Clone M28623

FORMULATION

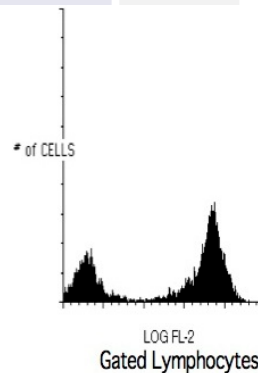
Provided as sterile filtered solution in phosphate buffered saline with 0.08% sodium azide and 0.2% carrier protein

ISOTYPE

IgG2a

APPLICATIONS

Flow Cytometry



Peripheral blood lymphocytes stained with Exalpa's CD5 PE Conjugated Antibody (Cat. No. 0054).