

CD4 FITC - CD8 PE. Mouse Bi-Test™ Reagents (FITC/RPE)

COMMENTS

Identification of CD4 on human helper/inducer T cells expressing the 60,000 M.W. surface antigen (HLA class II reactive). CD4 is present in low density on monocytes. Identification of CD8 on human T cells suppressor/cytotoxic expressing the 32,000 M.W. alpha subunit surface antigens.

CONCENTRATION

See vial for concentration

SHIP CONDITIONS

Room Temperature

STORAGE CUSTOMER

Product should be stored at 4-8°C. DO NOT FREEZE

STABILITY

Reagents are stable for the period shown on the vial label when stored properly

USE

PBMC: Add 10 µl of MAB/10⁶ PBMC in 100 µl PBS. Mix gently and incubate for 15 minutes at 2° to 8°C. Wash twice with PBS and analyze or fix with 0.5% v/v of paraformaldehyde in PBS and analyze. **WHOLE BLOOD:** Add 10 µl of MAB/100 µl of whole blood. Mix gently and incubate for 15 minutes at room temperature 20°C. Lyse the whole blood. Wash once with PBS and analyze or fix with 0.5% v/v of paraformaldehyde in PBS and analyze. See instrument manufacturer's instructions for Lysed Whole Blood and Immunofluorescence analysis with a flow cytometer or microscope.

ORDERING INFORMATION

CATALOG NUMBER

0048

SIZE

100 Tests

FORM

Bi-Test (FITC/RPE) Reagent

HOST/CLONE

Mouse

FORMULATION

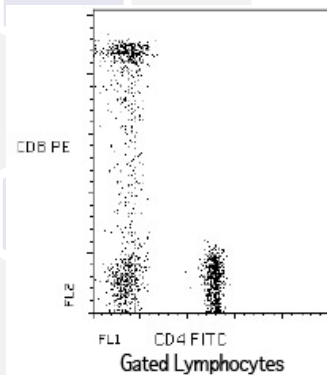
Provided as sterile filtered solution in phosphate buffered saline with 0.08% sodium azide and 0.2% carrier protein

ISOTYPE

IgG1 (F)/IgG1(PE)

APPLICATIONS

Flow Cytometry



Peripheral Blood Lymphocytes
Stained with Exalphi's Bi-Test CD4
FITC-CD8 PE Bi-Test Reagent (Cat.
No. 0048).