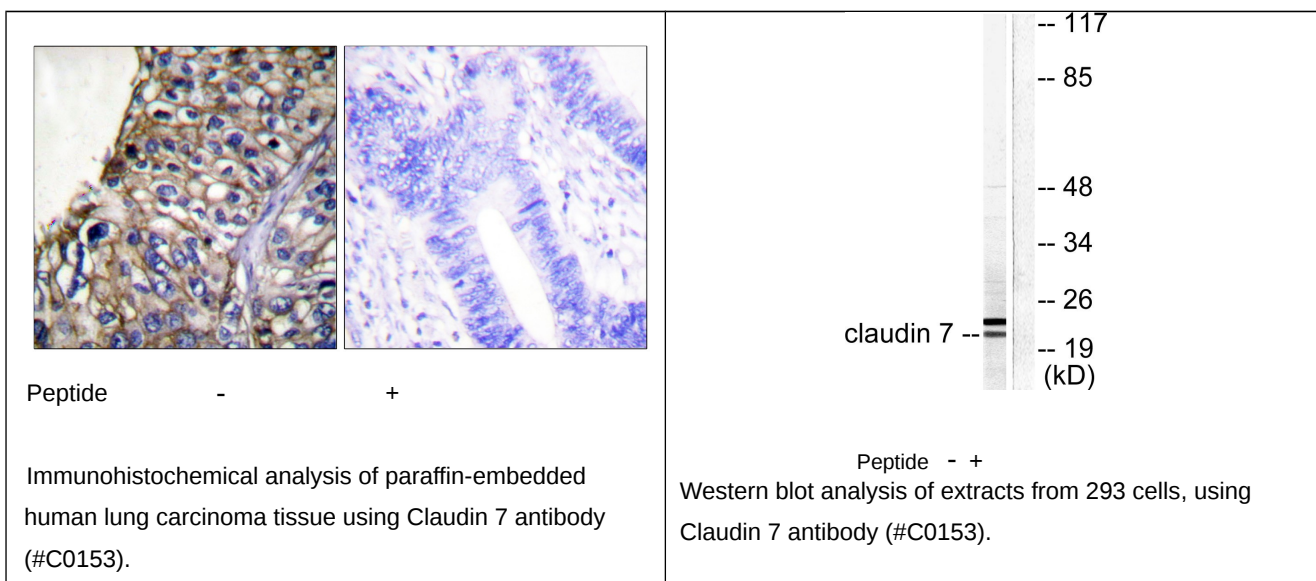




Claudin 7 Antibody

E11-0153C

Catalog Number:	E11-0153C
Amount:	100µg/100µl
Swiss-Prot No. :	O95471
All Names:	CEPTL2, CPETRL2, claudin-1, Clostridium perfringens enterotoxin receptor-like 2, claudin 9
Form of Antibody:	Rabbit IgG in phosphate buffered saline (without Mg ²⁺ and Ca ²⁺), pH 7.4, 150mM NaCl, 0.02% sodium azide and 50% glycerol.
Storage/Stability:	Store at -20°C/1 year
Immunogen:	The antiserum was produced against synthesized peptide derived from human Claudin 7.
Purification:	The antibody was affinity-purified from rabbit antiserum by affinity-chromatography using epitope-specific immunogen.
Specificity/Sensitivity	Claudin 7 antibody detects endogenous levels of total Claudin 7 protein.
Reactivity:	Human, Mouse, Rat
Applications:	WB: 1:500~1:1000 IHC: 1:50~1:100 ELISA: 1:20000
References:	Michele D. Alexandre, J. Cell Sci., Jun 2005; 118: 2683 - 2693. Mercedes Lioni, Am. J. Pathol., Feb 2007; 170: 709 - 721. Hiroki Fujita, J. Histochem. Cytochem., Aug 2006; 54: 933 - 944. Wing Y. Li, Am J Physiol Renal Physiol, Jun 2004; 286: F1063 - F1071.



For Research Use Only

For Research Use Only