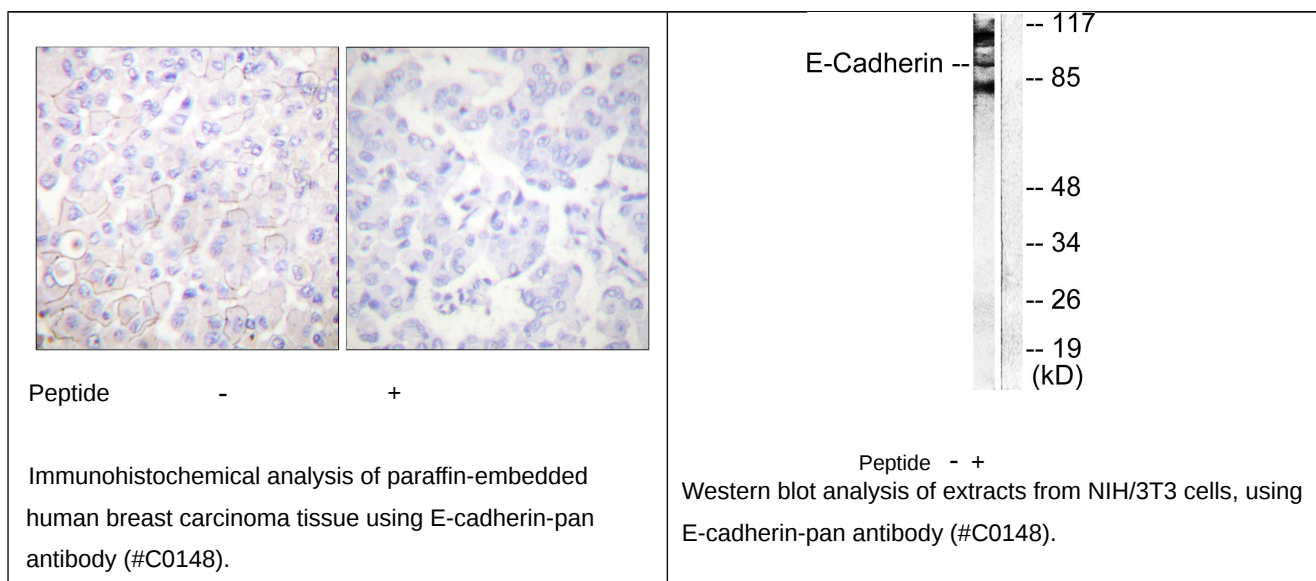




E-cadherin-pan Antibody

E11-0148C

Catalog Number:	E11-0148C
Amount:	100µg/100µl
Swiss-Prot No. :	P12830
All Names:	CADH1, CAM 120/80, CDH1, cadherin-1, epithelial-cadherin, uvomorulin
Form of Antibody:	Rabbit IgG in phosphate buffered saline (without Mg ²⁺ and Ca ²⁺), pH 7.4, 150mM NaCl, 0.02% sodium azide and 50% glycerol.
Storage/Stability:	Store at -20°C/1 year
Immunogen:	The antiserum was produced against synthesized peptide derived from human E-cadherin.
Purification:	The antibody was affinity-purified from rabbit antiserum by affinity-chromatography using epitope-specific immunogen.
Specificity/Sensitivity	E-cadherin-pan antibody detects endogenous levels of total E-cadherin protein.
Reactivity:	Human, Mouse, Rat
Applications:	WB: 1:500~1:1000 IHC: 1:50~1:100 ELISA: 1:20000
References:	Michaël Perrais, Mol. Biol. Cell, Mar 2007; 10.1091/mbc.E06-04-0348. Fiorella Balzac, J. Cell Sci., Oct 2005; 118: 4765 - 4783. Gianpaolo Suriano, Hum. Mol. Genet., Nov 2003; 12: 3007 - 3016. Seiyu Hosono, J. Biol. Chem., Apr 2000; 275: 10943.



For Research Use Only