



KLF4 Mouse Monoclonal Antibody

E10-30081

Background: Kruppel-like factor 4 (gut),endothelial Kruppel-like zinc finger protein. May act as a transcriptional activator. Binds the CACCC core sequence. May be involved in the differentiation of epithelial cells and may also function in the development of the skeleton and kidney. KLF4 is highly expressed in the epithelial cells of the skin and the gastrointestinal tract.

Catalog Number: E10-30081

Amount: 100µg/100µl

Clone Number: 1E5

Species: Mouse IgG1

MW: 55kDa

Aliases: EZF; GKLF; KLF4

Entrez Gene: 931

Immunogen: Purified recombinant fragment of human KLF4 expressed in E. Coli.

Storage: Store at 4°C, for long term storage, store at -20°C.

Formulation: Ascitic fluid containing 0.03% sodium azide.

Species Reactivities: Human

Tested Applications: WB, IHC, ELISA. Not yet tested in other applications.

Application notes: WB: 1/500 - 1/2000, IHC: 1/200-1/1000,
ELISA: Propose dilution 1/10000.

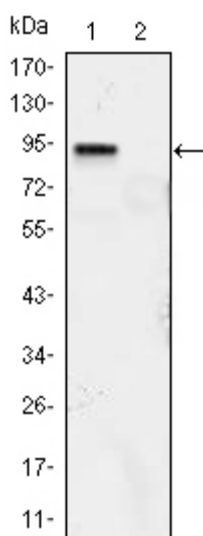


Figure 1: Western blot analysis using KLF4 mouse mAb against KLF4 (aa2-470)-hlgGFc transfected HEK293 (1) and HEK293 (2) cell lysate.

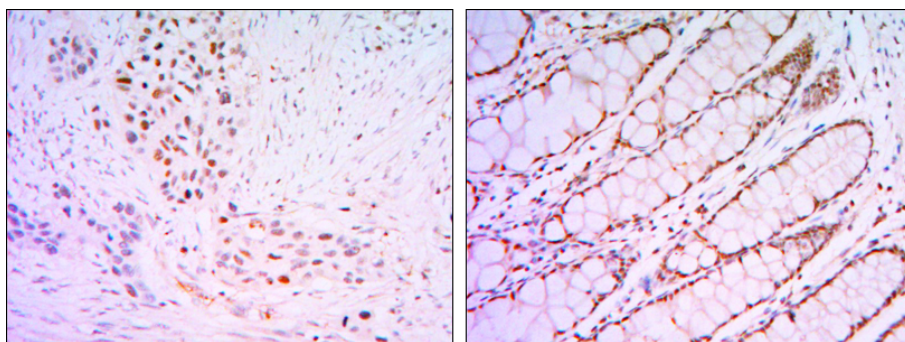


Figure 2: Immunohistochemical analysis of paraffin-embedded lung cancer tissues (left) and human rectum tissues (right) using KLF4 mouse mAb with DAB staining.

For Research Use Only