



## Myc (Ab-358) Antibody

E021035

**Catalog Number:** E021035-1, E021035-2

**Amount:** 50µg/50µl, 100µg/100µl

**Form of Antibody:** Rabbit IgG in phosphate buffered saline (without Mg<sup>2+</sup> and Ca<sup>2+</sup>), pH 7.4, 150mM NaCl, 0.02% sodium azide and 50% glycerol.

**Storage/Stability:** Store at -20°C/1 year

**Immunogen:** The antiserum was produced against synthesized non-phosphopeptide derived from human Myc around the phosphorylation site of threonine 358 (R-R-T<sup>P</sup>-H-N).

**Purification:** The antibody was affinity-purified from rabbit antiserum by affinity-chromatography using epitope-specific immunogen.

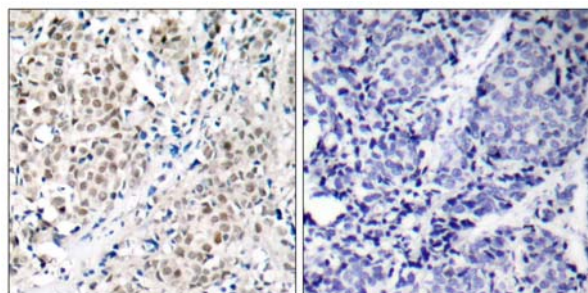
**Specificity/Sensitivity:** Myc (Ab-358) antibody detects endogenous levels of total Myc protein.

**Reactivity:** Human, Mouse, Rat

**Applications:** WB: 1:500~1:1000 IHC: 1:50~1:100

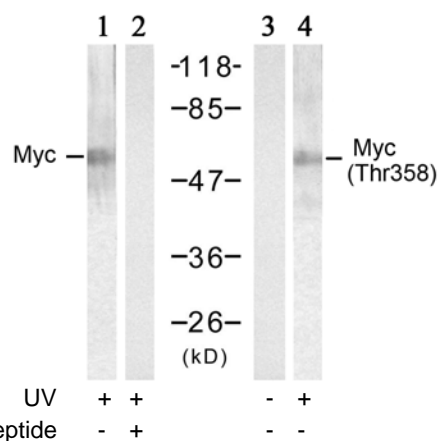
**Swiss-Prot No. :** P01106

**References:** Baudino T A, et al. (2001) Mol Cell Biol. 21: 691-702.  
Blackwood E M, et al. (1991) Science. 251:1211-1217.  
Henriksson M, et al. (1996) Adv Cancer Res. 68: 109-182.  
Grandori C, et al. (2000) Annu Rev Cell Dev Biol. 16: 653-699.



Peptide - +

Immunohistochemical analysis of paraffin- embedded human breast carcinoma tissue using Myc (Ab-358) antibody (E021035).



Western blot analysis of extracts from HT-29 cells treated with UV (20min), using Myc (Ab-358) antibody (E021035, Lane 1 and 2) and Myc (phospho-Thr358) antibody (E011035, Lane 3 and 4).

**For Research Use Only**