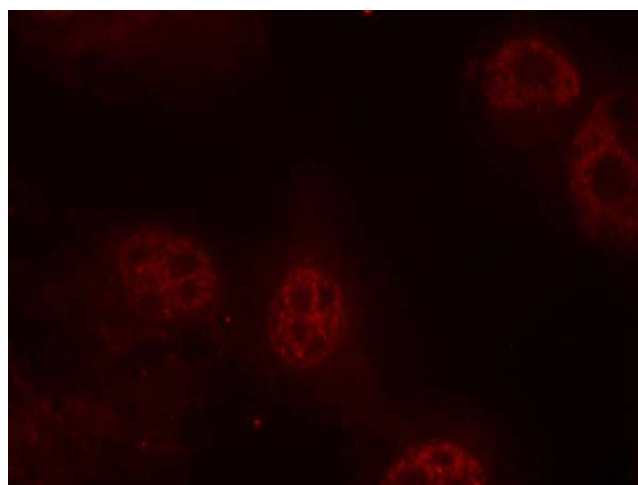




Myc (Phospho-Ser62) Antibody

E011311

- Catalog Number:** E011311-1, E011311-2
- Amount:** 50µg/50µl, 100µg/100µl
- Swiss-Prot No. :** P01106
- Form of Antibody:** Rabbit IgG in phosphate buffered saline (without Mg²⁺ and Ca²⁺), pH 7.4, 150mM NaCl, 0.02% sodium azide and 50% glycerol.
- Storage/Stability:** Store at -20°C/1 year
- Immunogen:** The antiserum was produced against synthesized phosphopeptide derived from human Myc around the phosphorylation site of serine 62(P-L-Sp-P-S).
- Purification:** The antibody was affinity-purified from rabbit antiserum by affinity-chromatography using epitope-specific phosphopeptide. The antibody against non-phosphopeptide was removed by chromatography using non-phosphopeptide corresponding to the phosphorylation site.
- Specificity/Sensitivity:** Myc (Phospho-Ser62) Antibody detects endogenous levels of Myc only when phosphorylated at serine 62.
- Reactivity:** Human, Mouse, Rat
- Applications:** IF:1:100~1:200
- References:** Baudino T A, et al. (2001) Mol Cell Biol. 21: 691-702.
Blackwood E M, et al. (1991) Science. 251:1211-1217.
Henriksson M, et al. (1996) Adv Cancer Res. 68: 109-182.
Grandori C, et al. (2000) Annu Rev Cell Dev Biol. 16: 653-699.



Immunofluorescence staining of methanol-fixed HeLa cells using Myc (Phospho-Ser62) Antibody (E011311, Red).

For Research Use Only