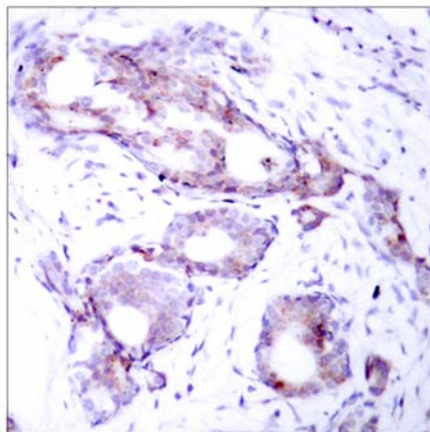




## Myc (Phospho-Ser373) Antibody

E011036

- Catalog Number:** E011036-1, E011036-2
- Amount:** 50µg/50µl, 100µg/100µl
- Form of Antibody:** Rabbit IgG in phosphate buffered saline (without Mg<sup>2+</sup> and Ca<sup>2+</sup>), pH 7.4, 150mM NaCl, 0.02% sodium azide and 50% glycerol.
- Storage/Stability:** Store at -20°C/1 year
- Immunogen:** The antiserum was produced against synthesized phosphopeptide derived from human Myc around the phosphorylation site of serine 373.
- Purification:** The antibody was affinity-purified from rabbit antiserum by affinity-chromatography using epitope-specific phosphopeptide. The antibody against non-phosphopeptide was removed by chromatography using non-phosphopeptide corresponding to the phosphorylation site.
- Specificity/Sensitivity:** Myc (phospho-Ser373) antibody detects endogenous levels of Myc only when phosphorylated at serine 373.
- Reactivity:** Human, Mouse, Rat
- Applications:** IHC: 1:50~1:100
- Swiss-Prot No. :** P01106
- References:** Baudino T A, et al. (2001) Mol Cell Biol. 21: 691-702.  
Blackwood E M, et al. (1991) Science. 251:1211-1217.  
Henriksson M, et al. (1996) Adv Cancer Res. 68: 109-182.  
Grandori C, et al. (2000) Annu Rev Cell Dev Biol. 16: 653-699.



Immunohistochemical analysis of paraffin- embedded human breast carcinoma tissue, using Myc (phospho-Ser373) antibody (E011036).

**For Research Use Only**