

M025-3

Product Information

Catalog Number: M025-3
Clone / Isotype: Leo.F2 / Rat (Wistar) IgG2a
Contents: DyLight 649-labeled immunoglobulin in phosphate buffered saline, 0.5% BSA, and 0.09% (w/v) sodium azide
Size: 1.5 ml / 300 tests

For research use only, not for diagnostic or therapeutic use. This product is no medical device.

Specificity: The Leo.F2 antibody reacts with murine integrin α IIb β 3 (GPIIb/IIIa, CD41/CD61), a heterodimeric glycoprotein complex consisting of the 135-kDa α IIb chain and the 90-kDa β 3 chain. Integrin α IIb β 3 is a platelet receptor for fibrinogen, von Willebrand factor, fibronectin, and vitronectin and it mediates platelet adhesion and aggregation^{1,2}.

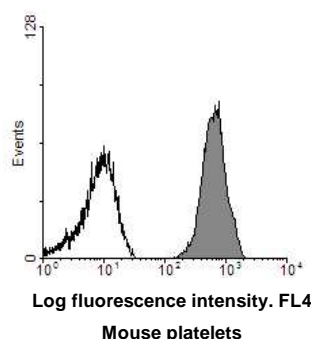
Preparation and Storage: The antibody was purified from hybridoma cell culture supernatant by Protein G-Sepharose chromatography. The antibody was conjugated with DyLight 649 under optimum conditions. The solution is free of unbound fluorescent dye. Store product undiluted at 4°C and avoid prolonged exposure to light. Stable for one year from date of shipment. Do not freeze.

Usage: The antibody preparation is optimized for flow cytometric applications: Use 5 μ l to stain $\sim 10^6$ platelets or $\sim 0.5 \times 10^6$ cells in a recommended volume of 25 μ l. Incubate for 15 minutes at room temperature, stop reaction by addition of 400 μ l PBS and analyze samples within 30 minutes. For immunofluorescent staining of acetone-fixed frozen sections, the appropriate dilution must be determined individually.

Caution: Sodium azide is a reversible inhibitor of oxidative metabolism; therefore, antibody preparations containing this preservative agent must not be used in cell cultures nor injected into animals. Sodium azide may be removed by washing stained cells or plate-bound antibody or dialyzing soluble antibody in sodium azide-free buffer.

Detection of GPIIb/IIIa on mouse platelets

Mouse blood was diluted 1:20 and 25 μ l of this dilution were stained with 5 μ l control IgG-649 (emfret Analytics, P190-3, *black line*) or Leo.F2-649 (*shaded area*) for 15 min at RT and analyzed directly. Platelets were gated by FSC/SSC characteristics.



- References:**
1. Phillips DR, Charo IF, Scarborough RM. (1990) GPIIb-IIIa: the responsive integrin. *Cell*. 65(3):359-62.
 2. Shattil SJ. (1999) Signaling through platelet integrin alpha IIb beta 3: inside-out, outside-in, and sideways. *Thromb Haemost*.82(2):318-25.