

Ordering Information

Web www.encorbio.com
Email admin@encorbio.com
Phone 352-372-7022
Fax 352-372-7066

HGNC name: NA, no human homolog

RRID: AB_2572246

Immunogen: N-terminal region, amino acids 1-608 and C-terminal region, amino acids 814-1372 of CAS9 sequence CDJ55032.1 from *S. pyogenes*, expressed in and purified from *E. coli*

Format: Purified antibody at 1mg/mL in 50% PBS, 50% glycerol plus 5mM NaCl

Storage: Store at 4°C for short term, for longer term at -20°C

Recommended dilutions:

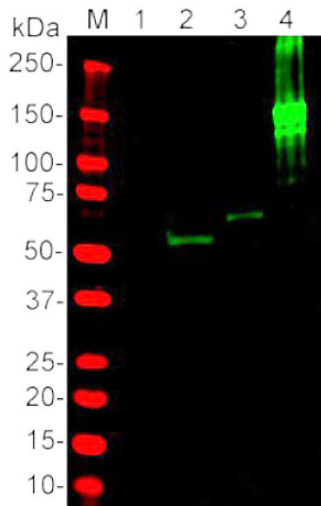
WB: 1:1,000-1: 2,000 on CAS9 transfected cells and 1:10,000 or lower on pure Cas9 protein.

IF/ICC: 1:1,000-2,000 .

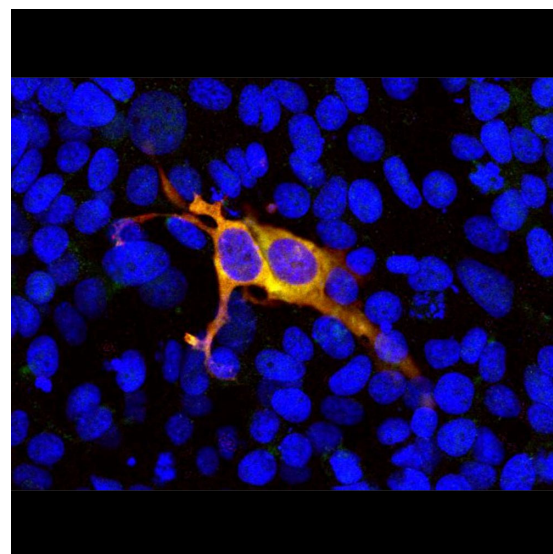
References:

1. Hsu PD, Lander ES, Zhang F. Development and Applications of CRISPR-Cas9 for Genome Engineering. *Cell* 157:1262-78 (2014).
2. Doudna J, Charpentier E. The new frontier of genome engineering with CRISPR-Cas9 *Science* 346:1077-86 (2014)
3. Long C, et al. Postnatal genome editing partially restores dystrophin expression in a mouse model of muscular dystrophy. *Science* 351:400-3 (2015).
4. Nelson CE, et al. In vivo genome editing improves muscle function in a mouse model of Duchenne muscular dystrophy. *Science* 351:403-7 (2015).
5. Tabebordbar M, et al. In vivo gene editing in dystrophic mouse muscle and muscle stem cells. *Science* 351:407-11 (2015).
6. Amoasii L, et al. Gene editing restores dystrophin expression in a canine model of Duchenne muscular dystrophy. *Science* doi:10.1126/science.aau1549 (2018).
7. Ran FA, et al. In vivo genome editing using Staphylococcus aureus Cas9. *Nature* 520:186-91 (2015).
8. Knott GJ, Doudna J. CRISPR-Cas guides the future of genetic engineering. *Science* 361:866-9 (2018).

Applications	Host	Isotype	Molecular Wt.	Species Cross-Reactivity
WB, IF/ICC, IHC	Mouse	IgG	160kDa	NA



Western blot analysis of RPCA-Cas9-Sp. Lane [M] Protein size Marker, [1] HEK293 non-transfected cell lysate, [2] transfected HEK293 cells expressing the C-terminal 814-1372 amino acids of Cas9 from *S. pyogenes*, [3] transfected HEK293 cells expressing the N-terminal 608 amino acids of Cas9 from *S. pyogenes*, [4] 40ng of full length *S. pyogenes* Cas9 protein. Blot was probed with RPCA-Cas9-AP at 1: 1,000 dilution. This antibody recognized the C-terminal region of Cas9 at 60kDa and N-terminal region of Cas9 at 68kDa in transfected cells. As expected this antibody also recognized full length Cas9 protein from *S. pyogenes* at 160kDa.



HEK293 cells were transfected with a construct including the N-terminal 608 amino acids of *S. pyogenes* CAS9 fused to GFP and stained with RPCA-CAS9-Sp in red. Transfected cells express the green fusion protein and bind the antibody in red, producing a yellow signal. Nuclear DNA in transfected and non-transfected cells is revealed with the blue DNA stain DAPI.

Background:

A recent revolution in biology has been stimulated by the discovery of CRISPR, or "Clustered Regularly Interspaced Short Palindromic Repeats" and the understanding of the "CRISPR Associated" enzymes (CAS 1,2). The CRISPR repeated sequences are found in bacterial genomes and function as part of unique bacterial immune system which contain short DNA sequences derived from viruses which have infected the bacteria. These virally derived sequences can make short RNA sequences which can hybridize with specific viral DNA and target a nuclease, such as CAS9, to the viral sequence. So CAS9 is directed to cleave the specific viral sequence and so inactivate the virus. The RNA sequence can be designed to specifically cut DNA virtually anywhere, including in the genomes of living human and other mammalian cells, allowing inexpensive gene editing with unprecedented ease. For example three groups of researchers essentially cured the disease state in a mouse model of Duchenne muscular dystrophy (3-5). A similar approach essentially cured dogs affected with a related disease state (6). Several varieties of CAS9 have been studied and there are several other related enzymes with similar properties. Much of the early work was performed with CAS9 from *Streptococcus pyogenes* which is rather large at ~158kDa, so the corresponding DNA is also rather large at about 4.2kb. This is problematic with some expression systems especially since DNA encoding RNA sequences and possibly other regulatory elements are usually required. The CAS9 gene of *Staphylococcus aureus* is significantly smaller, 3kb, producing a protein of 124kDa (7). For an excellent recent review of the various CAS family enzymes and their utility see reference 8.

The RPCA-CAS9-Sp antibody can be used to verify the expression of *S. pyogenes* CAS9 in cells and in tissues. EnCor also markets a mouse monoclonal to *S. pyogenes* CAS9, [MCA-3F9](#). EnCor also manufactures antibodies against the smaller CAS9 homologue from *S. aureus*.

FOR RESEARCH USE ONLY. NOT INTENDED FOR DIAGNOSTIC OR THERAPEUTIC USE.

Abbreviation Key:

mAb—Monoclonal Antibody pAb—Polyclonal Antibody WB—Western Blot IF—Immunofluorescence ICC—Immunocytochemistry IHC—Immunohistochemistry E—ELISA Hu—Human Mo—Monkey Do—Dog Rt—Rat Ms—Mouse Co—Cow Pi—Pig Ho—Horse Ch—Chicken Dr—D. rerio Dm—D. melanogaster Sm—S. mutans Ce—C. elegans Sc—S. cerevisiae Sa—S. aureus Ec—E. coli.