



## EB11158 - Goat Anti-Amyloid beta peptide (aa1-16) Antibody



Size: 100µg specific antibody in 200µl

### UK Office

#### Everest Biotech Ltd

Cherwell Innovation Centre  
77 Heyford Park  
Upper Heyford  
Oxfordshire  
OX25 5HD  
UK

Enquiries:

[info@everestbiotech.com](mailto:info@everestbiotech.com)

Sales:

[sales@everestbiotech.com](mailto:sales@everestbiotech.com)

Tech support:

[support@everestbiotech.com](mailto:support@everestbiotech.com)

Tel: +44 (0)1869 238326

Fax: +44 (0)1869 238327

### US Office

#### Everest Biotech c/o Abcore

405 Maple Street, Suite A106  
Ramona,  
CA 92065  
USA

Inquiries:

[info@everestbiotech.com](mailto:info@everestbiotech.com)

Sales:

[usasales@everestbiotech.com](mailto:usasales@everestbiotech.com)

Tech support:

[support@everestbiotech.com](mailto:support@everestbiotech.com)

Tel: 888-320-4628 (toll-free)

Fax: 888-841-9041

[www.everestbiotech.com](http://www.everestbiotech.com)

**Research Use Only. Not for diagnostic or therapeutic use.**

### Target Protein

**Principal Names:** AAA, ABETA, ABPP, AD1, alzheimer disease amyloid protein, amyloid beta (A4) precursor protein, amyloid beta A4 protein, APPI, beta-amyloid peptide, cerebral vascular amyloid peptide, CTFgamma, CVAP, OTTHUMP0000096096, peptidase nexin-II, PN2, PN-II, preA4, protease nexin-II, APP

**Official Symbol:** APP

**Accession Number(s):** NP\_000475.1; NP\_958816.1; NP\_958817.1; NP\_001129601.1; NP\_001129602.1

**Human GeneID(s):** [351](#)

**Important Comments:** This antibody is expected to recognize all reported isoforms of APP (NP\_000475.1; NP\_958816.1; NP\_958817.1; NP\_001129601.1; NP\_001129602.1) and to recognize all lengths of the Amyloid beta peptide.

### Immunogen

Peptide with sequence DAEFRHDSGYEVHHQK-C, from the N Terminus of the protein sequence according to NP\_000475.1; NP\_958816.1; NP\_958817.1; NP\_001129601.1; NP\_001129602.1.

Please note the [peptide](#) is available for sale.

### Purification and Storage

Purified from goat serum by ammonium sulphate precipitation followed by antigen affinity chromatography using the immunizing peptide.

Supplied at 0.5 mg/ml in Tris saline, 0.02% sodium azide, pH7.3 with 0.5% bovine serum albumin.

Aliquot and store at -20°C. Minimize freezing and thawing.

### Applications Tested

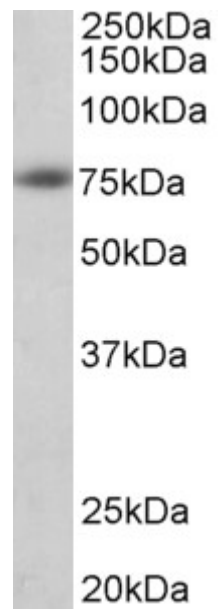
**Peptide ELISA:** antibody detection limit dilution 1:8000.

**Western blot:** Approx 75kDa band observed in Human Brain (Cerebral and Frontal cortex) lysates (calculated MW of 78.7kDa according to NP\_958817.1 and 72.6 according to NP\_001129601.1). Recommended concentration: 1-3µg/ml. Primary incubation was 1 hour.

### Species Reactivity

**Tested:** Human

**Expected from sequence similarity:** Human, Dog, Pig, Cow



EB11158 (1 $\mu$ g/ml) staining of Human Cerebral Cortex lysate (35 $\mu$ g protein in RIPA buffer). Detected by chemiluminescence.