



## UK Office

### Everest Biotech Ltd

Cherwell Innovation Centre  
77 Heyford Park  
Upper Heyford  
Oxfordshire  
OX25 5HD  
UK

Enquiries:

[info@everestbiotech.com](mailto:info@everestbiotech.com)

Sales:

[sales@everestbiotech.com](mailto:sales@everestbiotech.com)

Tech support:

[support@everestbiotech.com](mailto:support@everestbiotech.com)

Tel: +44 (0)1869 238326

Fax: +44 (0)1869 238327

## US Office

### Everest Biotech c/o Abcore

405 Maple Street, Suite A106  
Ramona,  
CA 92065  
USA

Inquiries:

[info@everestbiotech.com](mailto:info@everestbiotech.com)

Sales:

[usasales@everestbiotech.com](mailto:usasales@everestbiotech.com)

Tech support:

[support@everestbiotech.com](mailto:support@everestbiotech.com)

Tel: 888-320-4628 (toll-free)

Fax: 888-841-9041

[www.everestbiotech.com](http://www.everestbiotech.com)

**Research Use Only. Not for  
diagnostic or therapeutic use.**

## EB10355 - Goat Anti-CYP2E1 Antibody

Size: 100µg specific antibody in 200µl



### Target Protein

**Principal Names:** CPE1 antibody, CYP2E antibody, cytochrome P450 2E1 antibody, cytochrome P450, family 2, subfamily E, polypeptide 1 antibody, cytochrome P450, subfamily IIE (ethanol-inducible), polypeptide 1 antibody, flavoprotein-linked monooxygenase antibody, microsomal monooxygenase antibody, P450C2E antibody, P450-J antibody, xenobiotic mo antibody, CYP2E1 antibody

**Official Symbol:** CYP2E1

**Accession Number(s):** NP\_000764.1

**Human GeneID(s):** [1571](#)

### Immunogen

Peptide with sequence C-RKVIKNVAEVK, from the internal region of the protein sequence according to NP\_000764.1.

Please note the [peptide](#) is available for sale.

### Purification and Storage

Purified from goat serum by ammonium sulphate precipitation followed by antigen affinity chromatography using the immunizing peptide.

Supplied at 0.5 mg/ml in Tris saline, 0.02% sodium azide, pH7.3 with 0.5% bovine serum albumin.

Aliquot and store at -20°C. Minimize freezing and thawing.

### Applications Tested

**Peptide ELISA:** antibody detection limit dilution 1:32000.

**Western blot:** Approx 50kDa band observed in Human Liver lysates (calculated MW of 56.8kDa according to NP\_000764.1). Recommended concentration: 0.05-0.2µg/ml.

**IHC:** In paraffin embedded Human Liver shows ER-like staining in hepatocytes.

Recommended concentration, 3-5µg/ml.

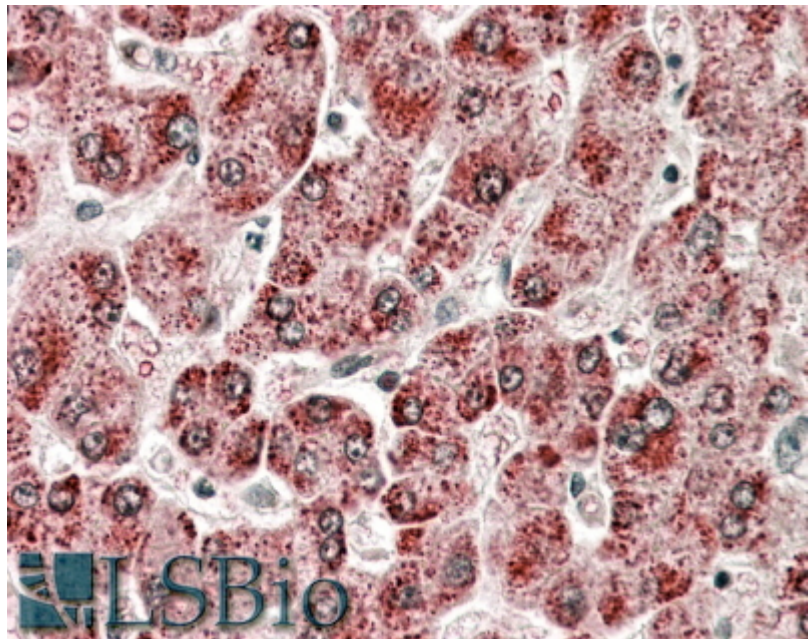
### Species Reactivity

**Tested:** Human

**Expected from sequence similarity:** Human



EB10355 (0.05 $\mu$ g/ml) staining of Human Liver lysate (35 $\mu$ g protein in RIPA buffer). Primary incubation was 1 hour. Detected by chemiluminescence.



EB10355 (3.8 $\mu$ g/ml) staining of paraffin embedded Human Liver. Steamed antigen retrieval with citrate buffer pH 6, AP-staining.