



UK Office

Everest Biotech Ltd
Cherwell Innovation Centre
77 Heyford Park
Upper Heyford
Oxfordshire
OX25 5HD
UK

Enquiries:

info@everestbiotech.com

Sales:

sales@everestbiotech.com

Tech support:

support@everestbiotech.com

Tel: +44 (0)1869 238326

Fax: +44 (0)1869 238327

US Office

Everest Biotech c/o Abcore
405 Maple Street, Suite A106
Ramona,
CA 92065
USA

Inquiries:

info@everestbiotech.com

Sales:

usasales@everestbiotech.com

Tech support:

support@everestbiotech.com

Tel: 888-320-4628 (toll-free)

Fax: 888-841-9041

www.everestbiotech.com

**Research Use Only. Not for
diagnostic or therapeutic use.**

EB09800 - Goat Anti-TPPP/p25 Antibody

Size: 100µg specific antibody in 200µl



Target Protein

Principal Names: brain specific protein p25 alpha antibody, glycogen synthase kinase 3 (GSK3) inhibitor p24 antibody, p24 antibody, p25 antibody, p25alpha antibody, TPPP/p25 antibody, TPPP1 antibody, tubulin polymerization promoting protein antibody, tubulin polymerization-promoting protein antibody, TPPP antibody

Official Symbol: TPPP

Accession Number(s): NP_008961.1

Human GeneID(s): [11076](#)

Non-Human GeneID(s): 72948 (mouse), 361466 (rat)

Immunogen

Peptide with sequence C-DPSKDRAAKRLSLES, from the internal region of the protein sequence according to NP_008961.1.

Please note the [peptide](#) is available for sale.

Purification and Storage

Purified from goat serum by ammonium sulphate precipitation followed by antigen affinity chromatography using the immunizing peptide.

Supplied at 0.5 mg/ml in Tris saline, 0.02% sodium azide, pH7.3 with 0.5% bovine serum albumin.

Aliquot and store at -20°C. Minimize freezing and thawing.

Applications Tested

Peptide ELISA: antibody detection limit dilution 1:32000.

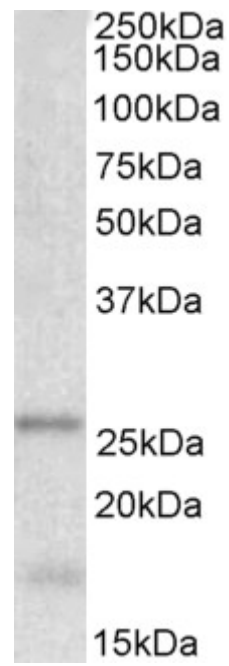
Western blot: Approx 26kDa band observed in Human Brain (Cerebellum), Mouse and Rat Brain lysates (calculated MW of 23.7kDa according to NP_008961.1). The observed molecular weight corresponds to earlier findings in literature with different antibodies (Acevedo et al, Exp Cell Res. 2007 Dec 10;313(20):4091-106; PMID: 18028908)..

Recommended concentration: 0.001-0.01µg/ml. An additional band of unknown identity was also consistently observed at 17kDa. This band was successfully blocked by incubation with the immunizing peptide. We would appreciate any feedback from people in the field - have any such results been reported with other antibodies/lysates? Have any further splice variants/modified forms been reported?

Species Reactivity

Tested: Human, Mouse, Rat

Expected from sequence similarity: Human, Pig



EB09800 (0.001 μ g/ml) staining of Human Cerebellum lysate (35 μ g protein in RIPA buffer). Primary incubation was 1 hour. Detected by chemiluminescence.