



UK Office

Everest Biotech Ltd

Cherwell Innovation Centre
77 Heyford Park
Upper Heyford
Oxfordshire
OX25 5HD
UK

Enquiries:

info@everestbiotech.com

Sales:

sales@everestbiotech.com

Tech support:

support@everestbiotech.com

Tel: +44 (0)1869 238326

Fax: +44 (0)1869 238327

US Office

Everest Biotech c/o Abcore

405 Maple Street, Suite A106
Ramona,
CA 92065
USA

Inquiries:

info@everestbiotech.com

Sales:

usasales@everestbiotech.com

Tech support:

support@everestbiotech.com

Tel: 888-320-4628 (toll-free)

Fax: 888-841-9041

www.everestbiotech.com

**Research Use Only. Not for
diagnostic or therapeutic use.**

EB09093 - Goat Anti-GABBR1 Antibody

Size: 100µg specific antibody in 200µl



Target Protein

Principal Names: GABBR1 antibody, gamma-aminobutyric acid (GABA) B receptor, 1 antibody, FLJ92613 antibody, GABAB(1e) antibody, GABABR1 antibody, GABBR1-3 antibody, GPRC3A antibody, dJ271M21.1.1 antibody, dJ271M21.1.2 antibody, hGB1a antibody, GABA-B receptor antibody, GABAB, subunit 1c antibody, OTTHUMP00000029114 antibody, OTTHUMP00000029115 antibody, OTTHUMP00000029116 antibody, OTTHUMP00000109099 antibody, gamma-aminobutyric acid (GABA) B receptor 1 antibody, seven transmembrane helix receptor antibody

Official Symbol: GABBR1

Accession Number(s): NP_001461.1; NP_068703.1; NP_068704.2; NP_068705.2

Human GeneID(s): [2550](#)

Important Comments: This antibody is expected to recognize reported isoforms a, b and c (NP_001461.1, NP_068703.1, NP_068704.2 resp.).

Immunogen

Peptide with sequence DRLSCDGSRVHLLYK, from the C Terminus of the protein sequence according to NP_001461.1; NP_068703.1; NP_068704.2; NP_068705.2.

Please note the [peptide](#) is available for sale.

Purification and Storage

Purified from goat serum by ammonium sulphate precipitation followed by antigen affinity chromatography using the immunizing peptide.

Supplied at 0.5 mg/ml in Tris saline, 0.02% sodium azide, pH7.3 with 0.5% bovine serum albumin.

Aliquot and store at -20°C. Minimize freezing and thawing.

Applications Tested

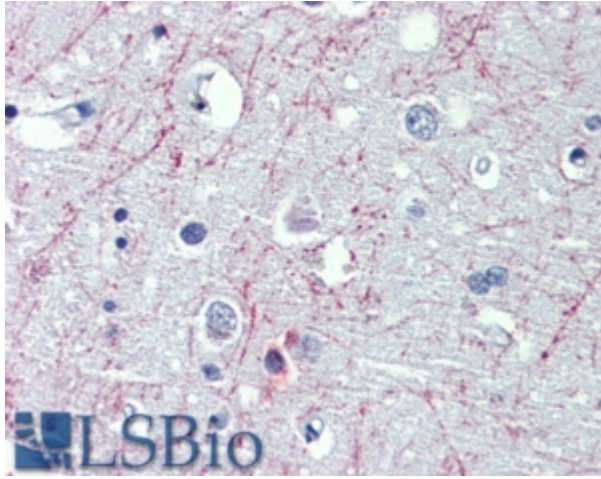
Peptide ELISA: antibody detection limit dilution 1:4000.

IHC: In paraffin embedded Human Cortex shows axonal staining. Recommended concentration, 5-8µg/ml.

Species Reactivity

Tested: Human

Expected from sequence similarity: Human, Mouse, Rat, Dog, Cow



EB09093 (5µg/ml) staining of paraffin embedded Human Cortex. Steamed antigen retrieval with citrate buffer pH 6, AP-staining.