



UK Office

Everest Biotech Ltd
Cherwell Innovation Centre
77 Heyford Park
Upper Heyford
Oxfordshire
OX25 5HD
UK

Enquiries:

info@everestbiotech.com

Sales:

sales@everestbiotech.com

Tech support:

support@everestbiotech.com

Tel: +44 (0)1869 238326

Fax: +44 (0)1869 238327

US Office

Everest Biotech c/o Abcore
405 Maple Street, Suite A106
Ramona,
CA 92065
USA

Inquiries:

info@everestbiotech.com

Sales:

usasales@everestbiotech.com

Tech support:

support@everestbiotech.com

Tel: 888-320-4628 (toll-free)

Fax: 888-841-9041

www.everestbiotech.com

**Research Use Only. Not for
diagnostic or therapeutic use.**

EB08884 - Goat Anti-HOXD10 Antibody

Size: 100µg specific antibody in 200µl



Target Protein

Principal Names: HOXD10 antibody, homeobox D10 antibody, HOX4 antibody, HOX4D antibody, HOX4E antibody, Hox-4.4 antibody, homeo box 4D antibody, homeo box D10 antibody

Official Symbol: HOXD10

Accession Number(s): NP_002139.2

Human GeneID(s): [3236](#)

Non-Human GeneID(s): 15430 (mouse), 303991 (rat)

Immunogen

Peptide with sequence PNRSCRIEQPVTQQ, from the internal region of the protein sequence according to NP_002139.2.

Please note the [peptide](#) is available for sale.

Purification and Storage

Purified from goat serum by ammonium sulphate precipitation followed by antigen affinity chromatography using the immunizing peptide.

Supplied at 0.5 mg/ml in Tris saline, 0.02% sodium azide, pH7.3 with 0.5% bovine serum albumin.

Aliquot and store at -20°C. Minimize freezing and thawing.

Applications Tested

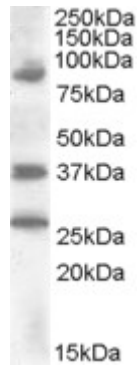
Peptide ELISA: antibody detection limit dilution 1:32000.

Western blot: Approx. 37 kDa band observed in Human Kidney lysates (calculated MW of 38.4 kDa according to NP_002139.2). Recommended concentration: 0.2-0.6µg/ml. Additional bands of unknown identity were also consistently observed at 90+26 kDa. These bands were successfully blocked by incubation with the immunising peptide. We would appreciate any feedback from people in the field - have any such results been reported with other antibodies/lysates? Have any further splice variants/modified forms been reported?

Species Reactivity

Tested: Human

Expected from sequence similarity: Human, Mouse, Rat, Horse, Cow



EB08884 (0.2 μ g/ml) staining of Human Kidney lysate (35 μ g protein in RIPA buffer). Primary incubation was 1 hour. Detected by chemiluminescence.