



UK Office

Everest Biotech Ltd

Cherwell Innovation Centre
77 Heyford Park
Upper Heyford
Oxfordshire
OX25 5HD
UK

Enquiries:

info@everestbiotech.com

Sales:

sales@everestbiotech.com

Tech support:

support@everestbiotech.com

Tel: +44 (0)1869 238326

Fax: +44 (0)1869 238327

US Office

Everest Biotech c/o Abcore

405 Maple Street, Suite A106
Ramona,
CA 92065
USA

Inquiries:

info@everestbiotech.com

Sales:

usasales@everestbiotech.com

Tech support:

support@everestbiotech.com

Tel: 888-320-4628 (toll-free)

Fax: 888-841-9041

www.everestbiotech.com

**Research Use Only. Not for
diagnostic or therapeutic use.**

EB08710 - Goat Anti-ABCD3 Antibody

Size: 100µg specific antibody in 200µl



Target Protein

Principal Names: ABCD3 antibody, ATP-binding cassette, sub-family D (ALD), member 3 antibody, ABC43 antibody, PMP70 antibody, PXMP1 antibody, ATP-binding cassette, sub-family D, member 3 antibody, Peroxisomal membrane protein-1 (70kD) antibody, dJ824O18.1 (ATP-binding cassette, sub-family D (ALD), member 3 (PMP70, PXMP1)) antibody, peroxisomal membrane protein 1 (70kD, Zellweger syndrome) antibody

Official Symbol: ABCD3

Accession Number(s): NP_002849.1

Human GeneID(s): [5825](#)

Non-Human GeneID(s): 19299 (mouse), 25270 (rat)

Important Comments: This antibody is expected to recognize one isoform (NP_002849.1) only.

Immunogen

Peptide with sequence C-PDGREDQKRKGISD, from the internal region of the protein sequence according to NP_002849.1.

Please note the [peptide](#) is available for sale.

Purification and Storage

Purified from goat serum by ammonium sulphate precipitation followed by antigen affinity chromatography using the immunizing peptide.

Supplied at 0.5 mg/ml in Tris saline, 0.02% sodium azide, pH7.3 with 0.5% bovine serum albumin.

Aliquot and store at -20°C. Minimize freezing and thawing.

Applications Tested

Peptide ELISA: antibody detection limit dilution 1:16000.

Western blot: Approx. 70kDa band observed in Human Kidney lysates (calculated MW of 75.5kDa according to NP_002849.1). Recommended concentration: 0.2-0.6 µg/ml.

IHC: In paraffin embedded Human Testis shows vesicular staining in Sertoli cells.

Recommended concentration, 2.5-3.8µg/ml.

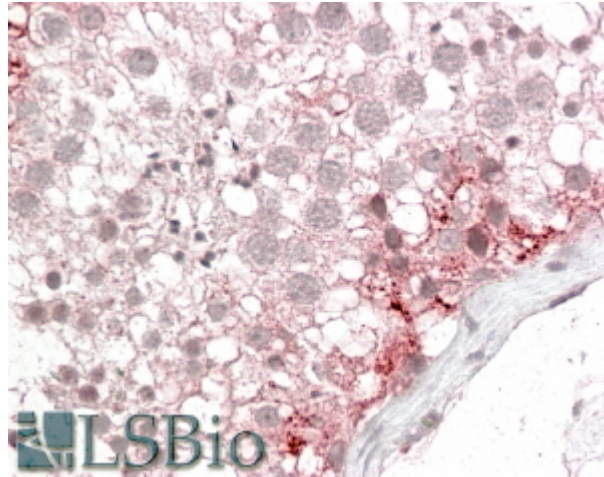
Species Reactivity

Tested: Human

Expected from sequence similarity: Human, Mouse, Rat



EB08710 (0.2 μ g/ml) staining of Human Kidney lysate (35 μ g protein in RIPA buffer). Primary incubation was 1 hour. Detected by chemiluminescence.



EB08710 (3.8 μ g/ml) staining of paraffin embedded Human Testis. Steamed antigen retrieval with citrate buffer pH 6, AP-staining.