



## EB08284 - Goat Anti-PITX3 Antibody

Size: 100µg specific antibody in 200µl



### UK Office

#### Everest Biotech Ltd

Cherwell Innovation Centre  
77 Heyford Park  
Upper Heyford  
Oxfordshire  
OX25 5HD  
UK

Enquiries:

[info@everestbiotech.com](mailto:info@everestbiotech.com)

Sales:

[sales@everestbiotech.com](mailto:sales@everestbiotech.com)

Tech support:

[support@everestbiotech.com](mailto:support@everestbiotech.com)

Tel: +44 (0)1869 238326

Fax: +44 (0)1869 238327

### US Office

#### Everest Biotech c/o Abcore

405 Maple Street, Suite A106  
Ramona,  
CA 92065  
USA

Inquiries:

[info@everestbiotech.com](mailto:info@everestbiotech.com)

Sales:

[usasales@everestbiotech.com](mailto:usasales@everestbiotech.com)

Tech support:

[support@everestbiotech.com](mailto:support@everestbiotech.com)

Tel: 888-320-4628 (toll-free)

Fax: 888-841-9041

[www.everestbiotech.com](http://www.everestbiotech.com)

**Research Use Only. Not for  
diagnostic or therapeutic use.**

### Target Protein

**Principal Names:** PITX3 antibody, paired-like homeodomain 3 antibody, MGC12766 antibody, PTX3 antibody, homeobox protein PITX3 antibody

**Official Symbol:** PITX3

**Accession Number(s):** NP\_005020.1

**Human GeneID(s):** [5309](#)

**Important Comments:** This antibody is not expected to cross-react with PITX1 and PITX2.

### Immunogen

Peptide with sequence PEHGCKGQEHSD, from the internal region of the protein sequence according to NP\_005020.1.

Please note the [peptide](#) is available for sale.

### Purification and Storage

Purified from goat serum by ammonium sulphate precipitation followed by antigen affinity chromatography using the immunizing peptide.

Supplied at 0.5 mg/ml in Tris saline, 0.02% sodium azide, pH7.3 with 0.5% bovine serum albumin.

Aliquot and store at -20°C. Minimize freezing and thawing.

### Applications Tested

**Peptide ELISA:** antibody detection limit dilution 1:1000.

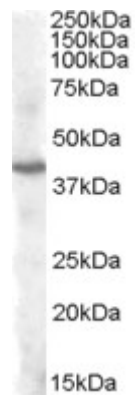
**Western blot:** Approx 40kDa band observed in Human Brain (Cerebellum and Cerebral Cortex) lysates (calculated MW of 31.8kDa according to NP\_005020.1). The observed molecular weight corresponds to earlier findings in literature with different antibodies (Coulon et al, J Biol Chem. 2007 Nov 9;282(45):33192-200.; PMID: 17848564).

Recommended concentration: 0.3-1µg/ml.

### Species Reactivity

**Tested:** Human

**Expected from sequence similarity:** Human



EB08284 (1µg/ml) staining of Human Cerebellum lysate (35µg protein in RIPA buffer). Primary incubation was 1 hour. Detected by chemiluminescence.