



UK Office

Everest Biotech Ltd

Cherwell Innovation Centre
77 Heyford Park
Upper Heyford
Oxfordshire
OX25 5HD
UK

Enquiries:

info@everestbiotech.com

Sales:

sales@everestbiotech.com

Tech support:

support@everestbiotech.com

Tel: +44 (0)1869 238326

Fax: +44 (0)1869 238327

US Office

Everest Biotech c/o Abcore

405 Maple Street, Suite A106
Ramona,
CA 92065
USA

Inquiries:

info@everestbiotech.com

Sales:

usasales@everestbiotech.com

Tech support:

support@everestbiotech.com

Tel: 888-320-4628 (toll-free)

Fax: 888-841-9041

www.everestbiotech.com

Research Use Only. Not for diagnostic or therapeutic use.

EB08035 - Goat Anti-CRHR1 / CRF-R (aa 107 - 117) Antibody

Size: 100µg specific antibody in 200µl



Target Protein

Principal Names: CRHR1 antibody, CRF-R antibody, corticotropin releasing hormone receptor 1 antibody, CRF1 antibody, CRFR1 antibody, CRH-R1h antibody, CRHR antibody, CRHR1f antibody, corticotropin releasing hormone receptor variant 1h antibody, seven transmembrane helix receptor antibody

Official Symbol: CRHR1

Accession Number(s): NP_004373.2

Human GeneID(s): [1394](#)

Non-Human GeneID(s): 12921 (mouse), 58959 (rat)

Immunogen

Peptide with sequence C-NEEKKSKVHYH, from the internal region of the protein sequence according to NP_004373.2.

Please note the [peptide](#) is available for sale.

Purification and Storage

Purified from goat serum by ammonium sulphate precipitation followed by antigen affinity chromatography using the immunizing peptide.

Supplied at 0.5 mg/ml in Tris saline, 0.02% sodium azide, pH7.3 with 0.5% bovine serum albumin.

Aliquot and store at -20°C. Minimize freezing and thawing.

Applications Tested

Peptide ELISA: antibody detection limit dilution 1:32000.

Western blot: Approx 60-70kDa band observed in human brain (cerebellum) and human colon lysates (calculated MW of 47.7kDa according to NP_004373.2). The observed molecular weight corresponds to earlier findings in literature with different antibodies (Xu et al, Mol Pharmacol. 2001 Mar;59(3):485-92; PMID: 11179443) . Recommended concentration: 0.1-0.3µg/ml.

Immunofluorescence: This product was successfully used in immunofluorescence on mouse brain at 2ug/ml when incubated at 4C for 40h.

Species Reactivity

Tested: Human, Mouse

Expected from sequence similarity: Human, Mouse, Rat

Specific Reference

This antibody has been successfully used (in IHC on Mouse brain) in the following paper:

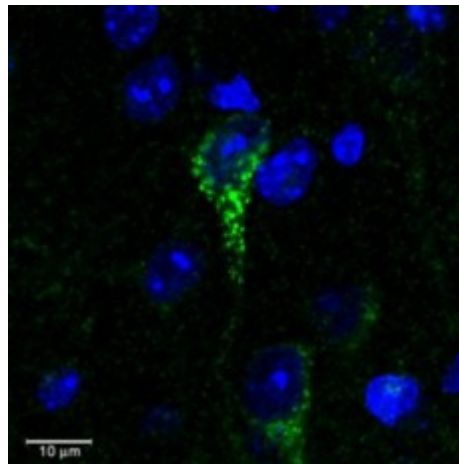
Jüngling K, Liu X, Lesting J, Coulon P, Sosulina L, Reinscheid RK, Pape HC. Activation of neuropeptide S expressing neurons in the locus coeruleus by corticotropin-releasing factor.

J Physiol. 2012 May 8.

PMID: 22570383



EB08035 (0.1 μ g/ml) staining of human colon lysate (35 μ g protein in RIPA buffer). Primary incubation was 1 hour. Detected by chemiluminescence.



Confocal image (3 μ m) of EB08035 (0.3 μ g/ml) staining in green a dendrite of a neuronal cell in C57 mouse cortex. Counter-stained with DAPI (in blue). Data kindly provided by Dr Y. Chen, TZ Baram lab, UC Irvine, CA.