



EB07754 - Goat Anti-APBA1 / MINT1 Antibody

Size: 100µg specific antibody in 200µl



UK Office

Everest Biotech Ltd

Cherwell Innovation Centre
77 Heyford Park
Upper Heyford
Oxfordshire
OX25 5HD
UK

Enquiries:

info@everestbiotech.com

Sales:

sales@everestbiotech.com

Tech support:

support@everestbiotech.com

Tel: +44 (0)1869 238326

Fax: +44 (0)1869 238327

US Office

Everest Biotech c/o Abcore

405 Maple Street, Suite A106
Ramona,
CA 92065
USA

Inquiries:

info@everestbiotech.com

Sales:

usasales@everestbiotech.com

Tech support:

support@everestbiotech.com

Tel: 888-320-4628 (toll-free)

Fax: 888-841-9041

www.everestbiotech.com

**Research Use Only. Not for
diagnostic or therapeutic use.**

Target Protein

Principal Names: APBA1 antibody, MINT1 antibody, amyloid beta (A4) precursor protein-binding, family A, member 1 (X11) antibody, D9S411E antibody, mint antibody, X11 antibody, X11A antibody, X11ALPHA antibody, adaptor protein X11alpha amyloid beta A4 precursor protein-binding, family A, member 1 antibody, neuron-specific X11 protein antibody, neuronal munc18-1-interacting protein 1 antibody, phosphotyrosine-binding/-interacting domain (PTB)-bearing protein antibody

Official Symbol: APBA1

Accession Number(s): NP_001154.2

Human GeneID(s): [320](#)

Non-Human GeneID(s): 319924 (mouse), 83589 (rat)

Immunogen

Peptide with sequence C-EASHPSQDGKRQYK, from the internal region of the protein sequence according to NP_001154.2.

Please note the [peptide](#) is available for sale.

Purification and Storage

Purified from goat serum by ammonium sulphate precipitation followed by antigen affinity chromatography using the immunizing peptide.

Supplied at 0.5 mg/ml in Tris saline, 0.02% sodium azide, pH7.3 with 0.5% bovine serum albumin.

Aliquot and store at -20°C. Minimize freezing and thawing.

Applications Tested

Peptide ELISA: antibody detection limit dilution 1:16000.

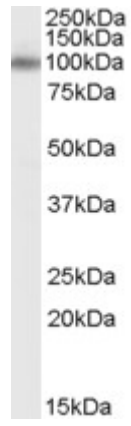
Western blot: Approx 100kDa band observed in Human Brain (Cerebellum and Hippocampus) lysates (calculated MW of 92.9kDa according to NP_001154.2).

Recommended concentration: 0.1-0.3µg/ml.

Species Reactivity

Tested: Human

Expected from sequence similarity: Human, Mouse, Rat



EB07754 (0.1 μ g/ml) staining of Human Brain (Cerebellum) lysate (35 μ g protein in RIPA buffer). Primary incubation was 1 hour. Detected by chemiluminescence.