



## EB07693 - Goat Anti-NANOG (C Terminus) Antibody

Size: 100µg specific antibody in 200µl



### UK Office

**Everest Biotech Ltd**  
Cherwell Innovation Centre  
77 Heyford Park  
Upper Heyford  
Oxfordshire  
OX25 5HD  
UK

Enquiries:

[info@everestbiotech.com](mailto:info@everestbiotech.com)

Sales:

[sales@everestbiotech.com](mailto:sales@everestbiotech.com)

Tech support:

[support@everestbiotech.com](mailto:support@everestbiotech.com)

Tel: +44 (0)1869 238326

Fax: +44 (0)1869 238327

### US Office

**Everest Biotech c/o Abcore**  
405 Maple Street, Suite A106  
Ramona,  
CA 92065  
USA

Inquiries:

[info@everestbiotech.com](mailto:info@everestbiotech.com)

Sales:

[usasales@everestbiotech.com](mailto:usasales@everestbiotech.com)

Tech support:

[support@everestbiotech.com](mailto:support@everestbiotech.com)

Tel: 888-320-4628 (toll-free)

Fax: 888-841-9041

[www.everestbiotech.com](http://www.everestbiotech.com)

**Research Use Only. Not for diagnostic or therapeutic use.**

### Target Protein

**Principal Names:** NANOG antibody, Nanog homeobox antibody, homeobox transcription factor Nanog antibody, homeobox transcription factor Nanog-delta 48 antibody

**Official Symbol:** NANOG

**Accession Number(s):** NP\_079141.2

**Human GeneID(s):** [79923](#)

### Immunogen

Peptide with sequence C-DLFLNYSMNMQPED, from the C Terminus of the protein sequence according to NP\_079141.2.

Please note the [peptide](#) is available for sale.

### Purification and Storage

Purified from goat serum by ammonium sulphate precipitation followed by antigen affinity chromatography using the immunizing peptide.

Supplied at 0.5 mg/ml in Tris saline, 0.02% sodium azide, pH7.3 with 0.5% bovine serum albumin.

Aliquot and store at -20°C. Minimize freezing and thawing.

### Applications Tested

**Peptide ELISA:** antibody detection limit dilution 1:128000.

**Western blot:** Approx 35kDa band observed in nuclear lysates of cell line HeLa (calculated MW of 34.6kDa according to NP\_079141.1). Recommended concentration: 0.05-0.1µg/ml. An additional band of approx. 37kDa is observed and is consistent with the observations of higher molecular weight bands regularly found with antibodies from other sources.

**IHC:** In paraffin embedded Human Testis shows nuclear staining in spermatogonia.

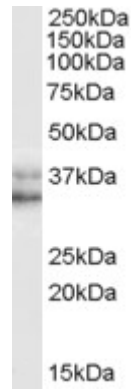
Recommended concentration, 1-2µg/ml.

**Enzyme immunoassay:** Sandwich-type ELISA with increasing amount of recombinant NANOG captured by a rabbit antibody. Recommended reporter concentration: 5-10ug/ml

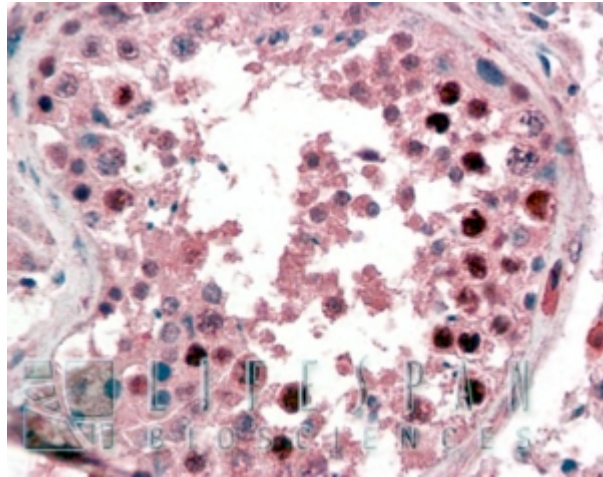
### Species Reactivity

**Tested:** Human

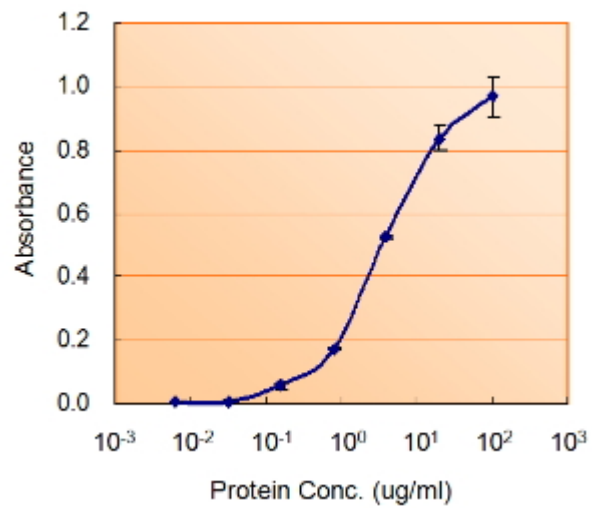
**Expected from sequence similarity:** Human



EB07693 (0.05µg/ml) staining of HeLa (nuclear) cell lysate (35µg protein in RIPA buffer). Primary incubation was 1 hour. Detected by chemiluminescence.



EB07693 (2µg/ml) staining of paraffin embedded Human Testis. Steamed antigen retrieval with citrate buffer pH 6, AP-staining.



EB0793 (5ug/ml) as the reporter with EB002009 as the capture rabbit antibody (5ug/ml).