



## UK Office

### Everest Biotech Ltd

Cherwell Innovation Centre  
77 Heyford Park  
Upper Heyford  
Oxfordshire  
OX25 5HD  
UK

Enquiries:

[info@everestbiotech.com](mailto:info@everestbiotech.com)

Sales:

[sales@everestbiotech.com](mailto:sales@everestbiotech.com)

Tech support:

[support@everestbiotech.com](mailto:support@everestbiotech.com)

Tel: +44 (0)1869 238326

Fax: +44 (0)1869 238327

## US Office

### Everest Biotech c/o Abcore

405 Maple Street, Suite A106  
Ramona,  
CA 92065  
USA

Inquiries:

[info@everestbiotech.com](mailto:info@everestbiotech.com)

Sales:

[usasales@everestbiotech.com](mailto:usasales@everestbiotech.com)

Tech support:

[support@everestbiotech.com](mailto:support@everestbiotech.com)

Tel: 888-320-4628 (toll-free)

Fax: 888-841-9041

[www.everestbiotech.com](http://www.everestbiotech.com)

**Research Use Only. Not for  
diagnostic or therapeutic use.**

## EB07626 - Goat Anti-OGT Antibody

Size: 100µg specific antibody in 200µl



### Target Protein

**Principal Names:** OGT antibody, O-linked N-acetylglucosamine (GlcNAc) transferase (UDP-N-acetylglucosamine:polypeptide-N-acetylglucosaminyl transferase) antibody, FLJ23071 antibody, HRNT1 antibody, MGC22921 antibody, O-GLCNAC antibody, O-GlcNAc transferase p110 subunit O-linked GlcNAc transferase antibody, uridinediphospho-N-acetylglucosamine:polypeptide beta-N-acetylglucosaminyl transferase antibody

**Official Symbol:** OGT

**Accession Number(s):** NP\_858058.1; NP\_858059.1

**Human GeneID(s):** [8473](#)

**Non-Human GeneID(s):** 108155 (mouse), 26295 (rat)

**Important Comments:** This antibody is expected to recognise both reported isoforms (NP\_858058.1 and NP\_858059.1)

### Immunogen

Peptide with sequence C-YEHPKDLKLS DGR, from the internal region of the protein sequence according to NP\_858058.1; NP\_858059.1.

Please note the [peptide](#) is available for sale.

### Purification and Storage

Purified from goat serum by ammonium sulphate precipitation followed by antigen affinity chromatography using the immunizing peptide.

Supplied at 0.5 mg/ml in Tris saline, 0.02% sodium azide, pH7.3 with 0.5% bovine serum albumin.

Aliquot and store at -20°C. Minimize freezing and thawing.

### Applications Tested

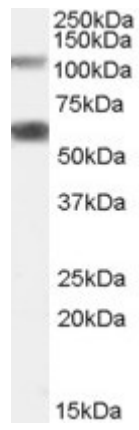
**Peptide ELISA:** antibody detection limit dilution 1:64000.

**Western blot:** Approx 110kDa band observed in Pancreas lysates from Rat and Mouse (calculated MW of 117kDa according to NP\_858058.1. Recommended concentration: 0.05-0.2µg/ml. An additional band of unknown identity was also consistently observed at 60kDa. This band was successfully blocked by incubation with the immunising peptide. We would appreciate any feedback from people in the field - have any such results been reported with other antibodies/lysates? Have any further splice variants/modified forms been reported?

### Species Reactivity

**Tested:** Mouse, Rat

**Expected from sequence similarity:** Human, Mouse, Rat, Dog



EB07626 (0.05 $\mu$ g/ml) staining of Rat Pancreas lysate (35 $\mu$ g protein in RIPA buffer). Primary incubation was 1 hour. Detected by chemiluminescence.