



EB07520 - Goat Anti-FOXP2 (internal) Antibody

Size: 100µg specific antibody in 200µl



UK Office

Everest Biotech Ltd

Cherwell Innovation Centre
77 Heyford Park
Upper Heyford
Oxfordshire
OX25 5HD
UK

Enquiries:

info@everestbiotech.com

Sales:

sales@everestbiotech.com

Tech support:

support@everestbiotech.com

Tel: +44 (0)1869 238326

Fax: +44 (0)1869 238327

US Office

Everest Biotech c/o Abcore

405 Maple Street, Suite A106
Ramona,
CA 92065
USA

Inquiries:

info@everestbiotech.com

Sales:

usasales@everestbiotech.com

Tech support:

support@everestbiotech.com

Tel: 888-320-4628 (toll-free)

Fax: 888-841-9041

www.everestbiotech.com

Research Use Only. Not for diagnostic or therapeutic use.

Target Protein

Principal Names: FOXP2 antibody, forkhead box P2 antibody, CAGH44 antibody, DKFZp686H1726 antibody, SPCH1 antibody, TNRC10 antibody, CAG repeat protein 44 antibody, forkhead/winged-helix transcription factor antibody, speech and language disorder 1 antibody, trinucleotide repeat containing 10 antibody

Official Symbol: FOXP2

Accession Number(s): NP_055306.1; NP_683696.2; NP_683697.2; NP_683698.2; NP_001166237.1

Human GeneID(s): [93986](#)

Non-Human GeneID(s): 114142 (mouse)

Important Comments: This antibody is expected to recognize isoform I (NP_055306.1), isoform II (NP_683696.2), isoform IV (NP_683698.2) and isoform V (NP_001166237.1).

Immunogen

Peptide with sequence C-DEVEYQKRRSQKIT, from the internal region of the protein sequence according to NP_055306.1; NP_683696.2; NP_683697.2; NP_683698.2; NP_001166237.1.

Please note the [peptide](#) is available for sale.

Purification and Storage

Purified from goat serum by ammonium sulphate precipitation followed by antigen affinity chromatography using the immunizing peptide.

Supplied at 0.5 mg/ml in Tris saline, 0.02% sodium azide, pH7.3 with 0.5% bovine serum albumin.

Aliquot and store at -20°C. Minimize freezing and thawing.

Applications Tested

Peptide ELISA: antibody detection limit dilution 1:64000.

Western blot: Approx 85kDa band observed in Human Brain (Cerebellum and Frontal Cortex) lysates and in Rat Brain lysates (calculated MW of 82.6kDa according to NP_683696.1). Recommended concentration: 0.3-1µg/ml. An additional band of unknown identity was also consistently observed at 28-30kDa. This band was successfully blocked by incubation with the immunising peptide. We would appreciate any feedback from people in the field - have any such results been reported with other antibodies/lysates? Have any further splice variants/modified forms been reported?

IHC: In paraffin embedded Human Prostate shows nuclear staining in the secretory cells. Recommended concentration, 2-4µg/ml.

Species Reactivity

Tested: Human, Rat

Expected from sequence similarity: Human, Mouse, Rat, Cat, Dog, Pig, Cow, Zebrafish

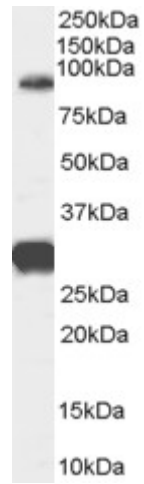
Specific Reference

Fujita H, Morita N, Furuichi T, Sugihara I.

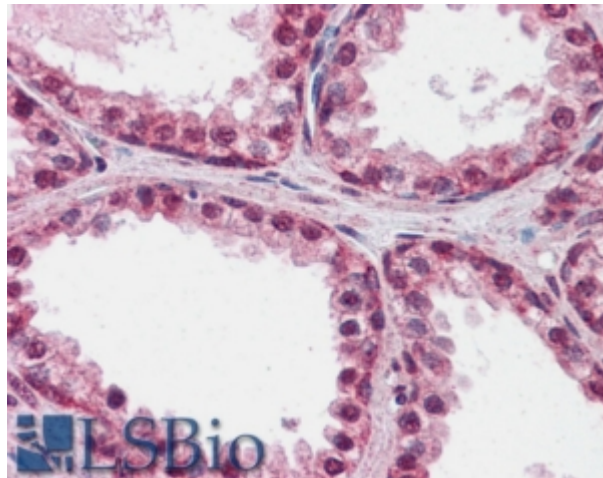
Clustered fine compartmentalization of the mouse embryonic cerebellar cortex and its rearrangement into the postnatal striped configuration.

J Neurosci. 2012 Nov 7;32(45):15688-703.

PMID: 23136409



EB07520 (0.3 μ g/ml) staining of Human Brain (Cerebellum) lysate (35 μ g protein in RIPA buffer). Primary incubation was 1 hour. Detected by chemiluminescence.



EB07520 (2.5 μ g/ml) staining of paraffin embedded Human Prostate. Steamed antigen retrieval with citrate buffer pH 6, AP-staining.