



EB07412 - Goat Anti-Septin 1 / SEPT1 Antibody

Size: 100µg specific antibody in 200µl



UK Office

Everest Biotech Ltd

Cherwell Innovation Centre
77 Heyford Park
Upper Heyford
Oxfordshire
OX25 5HD
UK

Enquiries:

info@everestbiotech.com

Sales:

sales@everestbiotech.com

Tech support:

support@everestbiotech.com

Tel: +44 (0)1869 238326

Fax: +44 (0)1869 238327

US Office

Everest Biotech c/o Abcore

405 Maple Street, Suite A106
Ramona,
CA 92065
USA

Inquiries:

info@everestbiotech.com

Sales:

usasales@everestbiotech.com

Tech support:

support@everestbiotech.com

Tel: 888-320-4628 (toll-free)

Fax: 888-841-9041

www.everestbiotech.com

**Research Use Only. Not for
diagnostic or therapeutic use.**

Target Protein

Principal Names: SEPT1 antibody, septin 1 antibody, DIFF6 antibody, LARP antibody, MGC20394 antibody, PNU TL3 antibody, SEP1 antibody, differentiation 6 (deoxyguanosine triphosphate triphosphohydrolase) antibody, serologically defined breast cancer antigen NY-BR-24 antibody

Official Symbol: SEPT1

Accession Number(s): NP_443070.1

Human GeneID(s): [1731](#)

Non-Human GeneID(s): 54204 (mouse), 293507 (rat)

Immunogen

Peptide with sequence C-GARDRASRSKLSRQ, from the internal region of the protein sequence according to NP_443070.1.

Please note the [peptide](#) is available for sale.

Purification and Storage

Purified from goat serum by ammonium sulphate precipitation followed by antigen affinity chromatography using the immunizing peptide.

Supplied at 0.5 mg/ml in Tris saline, 0.02% sodium azide, pH7.3 with 0.5% bovine serum albumin.

Aliquot and store at -20°C. Minimize freezing and thawing.

Applications Tested

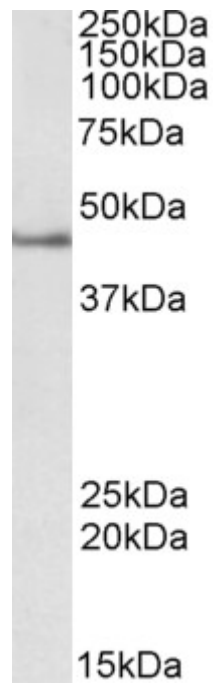
Peptide ELISA: antibody detection limit dilution 1:32000.

Western blot: Approx 45kDa band observed in lysates of cell line Jurkat (calculated MW of 42.0kDa according to NP_443070.1). Recommended concentration: 2-4µg/ml.

Species Reactivity

Tested:

Expected from sequence similarity: Human, Mouse, Rat, Dog



EB07412 (2 μ g/ml) staining of Jurkat lysate (35 μ g protein in RIPA buffer). Primary incubation was 1 hour.
Detected by chemiluminescence.