



## UK Office

**Everest Biotech Ltd**  
Cherwell Innovation Centre  
77 Heyford Park  
Upper Heyford  
Oxfordshire  
OX25 5HD  
UK

Enquiries:  
[info@everestbiotech.com](mailto:info@everestbiotech.com)

Sales:  
[sales@everestbiotech.com](mailto:sales@everestbiotech.com)

Tech support:  
[support@everestbiotech.com](mailto:support@everestbiotech.com)

Tel: +44 (0)1869 238326  
Fax: +44 (0)1869 238327

## US Office

**Everest Biotech c/o Abcore**  
405 Maple Street, Suite A106  
Ramona,  
CA 92065  
USA

Inquiries:  
[info@everestbiotech.com](mailto:info@everestbiotech.com)

Sales:  
[usasales@everestbiotech.com](mailto:usasales@everestbiotech.com)

Tech support:  
[support@everestbiotech.com](mailto:support@everestbiotech.com)

Tel: 888-320-4628 (toll-free)  
Fax: 888-841-9041

[www.everestbiotech.com](http://www.everestbiotech.com)

**Research Use Only. Not for  
diagnostic or therapeutic use.**

## EB07398 - Goat Anti-M1 mAChR / CHRM1 Antibody

Size: 100µg specific antibody in 200µl



### Target Protein

**Principal Names:** CHRM1 antibody, M1 mAChR antibody, cholinergic receptor, muscarinic 1 antibody, HM1 antibody, M1 antibody, MGC30125 antibody, muscarinic acetylcholine receptor M1 antibody

**Official Symbol:** CHRM1

**Accession Number(s):** NP\_000729.2

**Human GeneID(s):** [1128](#)

**Non-Human GeneID(s):** 12669 (mouse), 25229 (rat)

### Immunogen

Peptide with sequence C-DKRRWRKIPKRPGSVH, from the C Terminus of the protein sequence according to NP\_000729.2.

Please note the [peptide](#) is available for sale.

### Purification and Storage

Purified from goat serum by ammonium sulphate precipitation followed by antigen affinity chromatography using the immunizing peptide.

Supplied at 0.5 mg/ml in Tris saline, 0.02% sodium azide, pH7.3 with 0.5% bovine serum albumin.

Aliquot and store at -20°C. Minimize freezing and thawing.

### Applications Tested

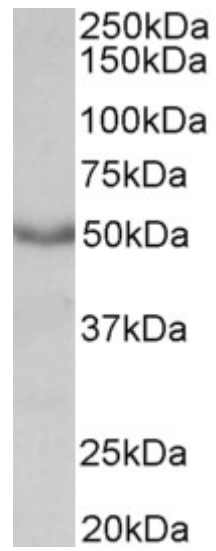
**Peptide ELISA:** antibody detection limit dilution 1:64000.

**Western blot:** Approx 50kDa band observed in Mouse Heart and Rat Heart lysates (calculated MW of 51.4kDa according to NP\_000729.2). Recommended concentration: 0.3-1µg/ml.

### Species Reactivity

**Tested:** Human

**Expected from sequence similarity:** Human, Mouse, Rat, Dog



EB07398 (0.3 $\mu$ g/ml) staining of Mouse Heart lysate (35 $\mu$ g protein in RIPA buffer). Primary incubation was 1 hour.  
Detected by chemiluminescence.