



## EB07387 - Goat Anti-TSPO / PBR (isoform) Antibody

Size: 100µg specific antibody in 200µl



### UK Office

#### Everest Biotech Ltd

Cherwell Innovation Centre  
77 Heyford Park  
Upper Heyford  
Oxfordshire  
OX25 5HD  
UK

Enquiries:

[info@everestbiotech.com](mailto:info@everestbiotech.com)

Sales:

[sales@everestbiotech.com](mailto:sales@everestbiotech.com)

Tech support:

[support@everestbiotech.com](mailto:support@everestbiotech.com)

Tel: +44 (0)1869 238326

Fax: +44 (0)1869 238327

### US Office

#### Everest Biotech c/o Abcore

405 Maple Street, Suite A106  
Ramona,  
CA 92065  
USA

Inquiries:

[info@everestbiotech.com](mailto:info@everestbiotech.com)

Sales:

[usasales@everestbiotech.com](mailto:usasales@everestbiotech.com)

Tech support:

[support@everestbiotech.com](mailto:support@everestbiotech.com)

Tel: 888-320-4628 (toll-free)

Fax: 888-841-9041

[www.everestbiotech.com](http://www.everestbiotech.com)

**Research Use Only. Not for diagnostic or therapeutic use.**

### Target Protein

**Principal Names:** TSPO antibody, PBR antibody, translocator protein (18kDa) antibody, BZRP antibody, DBI antibody, IBP antibody, MBR antibody, PKBS antibody, PTBR antibody, mDRC antibody, pk18 antibody, OTTHUMP0000028891 antibody, benzodiazapine receptor (peripheral) antibody, benzodiazepine peripheral binding site antibody, mitochondrial benzodiazepine receptor antibody, peripheral benzodiazepine receptor antibody, peripheral-type benzodiazepine receptor antibody

**Official Symbol:** TSPO

**Accession Number(s):** NP\_000705.2

**Human GeneID(s):** [706](#)

**Important Comments:** This antibody is expected to recognise one isoform (NP\_000705.2) only.

### Immunogen

Peptide with sequence C-RDNHGWRGGRRRLPE, from the C Terminus of the protein sequence according to NP\_000705.2.

Please note the [peptide](#) is available for sale.

### Purification and Storage

Purified from goat serum by ammonium sulphate precipitation followed by antigen affinity chromatography using the immunizing peptide.

Supplied at 0.5 mg/ml in Tris saline, 0.02% sodium azide, pH7.3 with 0.5% bovine serum albumin.

Aliquot and store at -20°C. Minimize freezing and thawing.

### Applications Tested

**Peptide ELISA:** antibody detection limit dilution 1:128000.

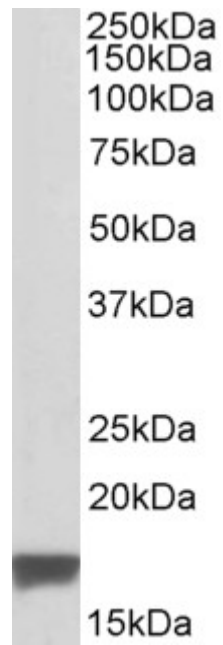
**Western blot:** Approx 17kDa band observed in Human Breast cancer lysates (calculated MW of 18.8kDa according to NP\_000705.2). Recommended concentration: 0.1-0.3µg/ml.

**IHC:** In paraffin embedded Human Colon shows strong cytoplasm staining of absorptive cells. Recommended concentration, 2-4µg/ml.

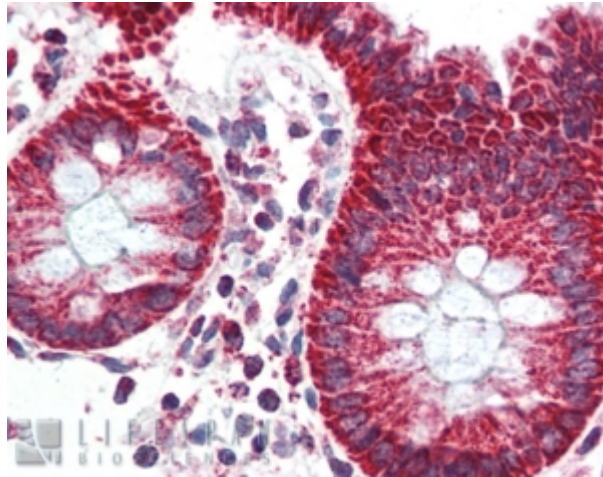
### Species Reactivity

**Tested:** Human

**Expected from sequence similarity:** Human



EB07387 (0.1 $\mu$ g/ml) staining of Human Breast Cancer lysate (35 $\mu$ g protein in RIPA buffer). Primary incubation was 1 hour. Detected by chemiluminescence.



EB07387 (2.5 $\mu$ g/ml) staining of paraffin embedded Human Colon. Steamed antigen retrieval with citrate buffer pH 6, AP-staining.