



UK Office

Everest Biotech Ltd

Cherwell Innovation Centre
77 Heyford Park
Upper Heyford
Oxfordshire
OX25 5HD
UK

Enquiries:

info@everestbiotech.com

Sales:

sales@everestbiotech.com

Tech support:

support@everestbiotech.com

Tel: +44 (0)1869 238326

Fax: +44 (0)1869 238327

US Office

Everest Biotech c/o Abcore

405 Maple Street, Suite A106
Ramona,
CA 92065
USA

Inquiries:

info@everestbiotech.com

Sales:

usasales@everestbiotech.com

Tech support:

support@everestbiotech.com

Tel: 888-320-4628 (toll-free)

Fax: 888-841-9041

www.everestbiotech.com

Research Use Only. Not for diagnostic or therapeutic use.

EB07286 - Goat Anti-Caspase 3 Antibody

Size: 100µg specific antibody in 200µl



Target Protein

Principal Names: CASP3, caspase 3, caspase 3, apoptosis-related cysteine protease, HGNC:1504, caspase 3, apoptosis-related cysteine peptidase, CPP32, CPP32B, SCA-1, PARP cleavage protease, SREBP cleavage activity 1, Yama, apopain, cysteine protease CPP32, procaspase3

Official Symbol: CASP3

Accession Number(s): NP_004337.2; NP_116786.1

Human GeneID(s): [836](#)

Important Comments: This antibody is expected to recognise both reported isoforms (NP_004337.2 and NP_116786.1).

Immunogen

Peptide with sequence C-RDVSKEDHSKRS, from the internal region of the protein sequence according to NP_004337.2; NP_116786.1.

Please note the [peptide](#) is available for sale.

Purification and Storage

Purified from goat serum by ammonium sulphate precipitation followed by antigen affinity chromatography using the immunizing peptide.

Supplied at 0.5 mg/ml in Tris saline, 0.02% sodium azide, pH7.3 with 0.5% bovine serum albumin.

Aliquot and store at -20°C. Minimize freezing and thawing.

Applications Tested

Peptide ELISA: antibody detection limit dilution 1:32000.

Western blot: Approx 32kDa band observed in lysates of cell line MOLT4 and in Mouse Liver lysates (calculated MW of 31.6kDa according to Human NP_004337.2 and 31.4kDa according to Mouse NP_033940.1, NP_001271338.1). An additional band of 65kDa was also consistently observed in MOLT4 and was successfully blocked by incubation with the immunizing peptide. Recommended concentration: 0.5-1µg/ml. Primary incubation 1 hour at room temperature.

Species Reactivity

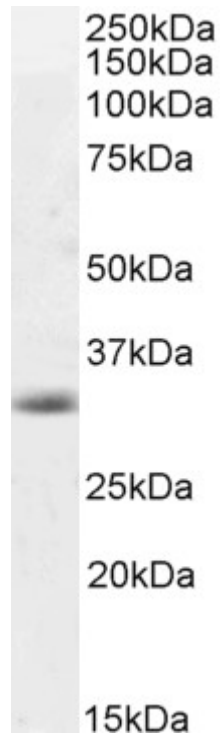
Tested: Human, Mouse

Expected from sequence similarity: Human, Mouse, Rat, Dog

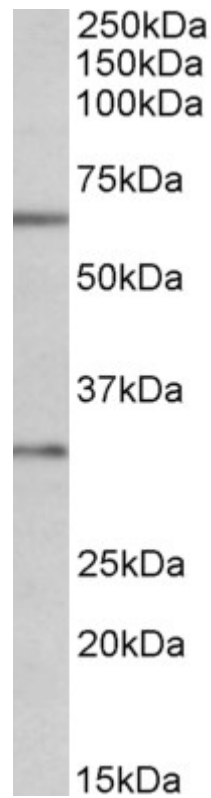
Specific Reference

This antibody has been successfully used in ICC on Rat:

Hóngyi Zhào, Yu Liu, Jing Zeng, Dandan Li, Weiwei Zhang, and Yonghua Huang
Troloxerutin and Cerebroprotein Hydrolysate Injection Protects Neurovascular Units from Oxygen-Glucose Deprivation and Reoxygenation-Induced Injury In Vitro
Evidence-Based Complementary and Alternative Medicine, vol. 2018, Article ID 9859672, 10 pages, 2018
PMID: 0



EB07286 (0.5 μg/ml) staining of Mouse Liver lysate (35 μg protein in RIPA buffer). Detected by chemiluminescence.



EB07286 (1 μg/ml) staining of MOLT4 lysate (35 μg protein in RIPA buffer). Primary incubation was 1 hour. Detected by chemiluminescence.