



EB07219 - Goat Anti-CYP17A1 Antibody

Size: 100µg specific antibody in 200µl



UK Office

Everest Biotech Ltd

Cherwell Innovation Centre
77 Heyford Park
Upper Heyford
Oxfordshire
OX25 5HD
UK

Enquiries:

info@everestbiotech.com

Sales:

sales@everestbiotech.com

Tech support:

support@everestbiotech.com

Tel: +44 (0)1869 238326

Fax: +44 (0)1869 238327

US Office

Everest Biotech c/o Abcore

405 Maple Street, Suite A106
Ramona,
CA 92065
USA

Inquiries:

info@everestbiotech.com

Sales:

usasales@everestbiotech.com

Tech support:

support@everestbiotech.com

Tel: 888-320-4628 (toll-free)

Fax: 888-841-9041

www.everestbiotech.com

Research Use Only. Not for diagnostic or therapeutic use.

Target Protein

Principal Names: CYP17A1 antibody, cytochrome P450, family 17, subfamily A, polypeptide 1 antibody, HGNC:2593 antibody, CPT7 antibody, CYP17 antibody, P450C17 antibody, S17AH antibody, cytochrome P450, family 17 antibody, cytochrome P450, subfamily XVII (steroid 17-alpha-hydroxylase), adrenal hyperplasia antibody, cytochrome p450 XVIIA1 antibody, steroid 17-alpha-hydroxylase/17,20 lyase antibody, steroid 17-alpha-monooxygenase antibody

Official Symbol: CYP17A1

Accession Number(s): NP_000093.1

Human GeneID(s): [1586](#)

Immunogen

Peptide with sequence C-LFKDGDQKLEK, from the internal region of the protein sequence according to NP_000093.1.

Please note the [peptide](#) is available for sale.

Purification and Storage

Purified from goat serum by ammonium sulphate precipitation followed by antigen affinity chromatography using the immunizing peptide.

Supplied at 0.5 mg/ml in Tris saline, 0.02% sodium azide, pH7.3 with 0.5% bovine serum albumin.

Aliquot and store at -20°C. Minimize freezing and thawing.

Applications Tested

Peptide ELISA: antibody detection limit dilution 1:64000.

Western blot: Approx 60kDa band observed in human ovary lysates (calculated MW of 57.4kDa according to NP_000093.1). Recommended concentration: 0.1-0.3µg/ml.

IHC: In paraffin embedded Human Adenal Gland shows strong granular staining of the cytoplasm in medulla cells. Recommended concentration, 3-5µg/ml.

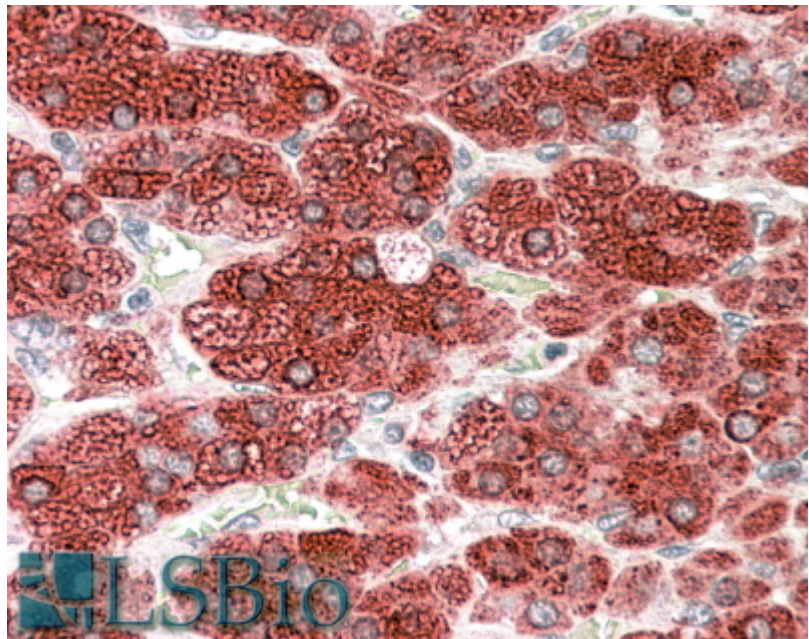
Species Reactivity

Tested: Human

Expected from sequence similarity: Human, Cat, Dog



EB07219 (0.3 μ g/ml) staining of human ovary lysate (35 μ g protein in RIPA buffer). Primary incubation was 1 hour. Detected by chemiluminescence.



EB07219 (3.8 μ g/ml) staining of paraffin embedded Human Adrenal Gland. Steamed antigen retrieval with citrate buffer pH 6, AP-staining.