



EB07038 - Goat Anti-FOXC1 (internal) Antibody

Size: 100µg specific antibody in 200µl



UK Office

Everest Biotech Ltd

Cherwell Innovation Centre
77 Heyford Park
Upper Heyford
Oxfordshire
OX25 5HD
UK

Enquiries:

info@everestbiotech.com

Sales:

sales@everestbiotech.com

Tech support:

support@everestbiotech.com

Tel: +44 (0)1869 238326

Fax: +44 (0)1869 238327

US Office

Everest Biotech c/o Abcore

405 Maple Street, Suite A106
Ramona,
CA 92065
USA

Inquiries:

info@everestbiotech.com

Sales:

usasales@everestbiotech.com

Tech support:

support@everestbiotech.com

Tel: 888-320-4628 (toll-free)

Fax: 888-841-9041

www.everestbiotech.com

Research Use Only. Not for diagnostic or therapeutic use.

Target Protein

Principal Names: FOXC1 antibody, forkhead box C1 antibody, HGNC:3800 antibody, ARA antibody, FKHL7 antibody, FREAC3 antibody, IGDA antibody, IHG1 antibody, IRID1 antibody, Forkhead, drosophila, homolog-like 7 antibody, forkhead (Drosophila)-like 7 antibody, forkhead-related activator 3 antibody, iridogoniodysgenesis type 1 antibody, myeloid factor-delta antibody, FREAC-3 antibody, RIEG3 antibody, forkhead/winged helix-like transcription factor 7 antibody

Official Symbol: FOXC1

Accession Number(s): NP_001444.2

Human GeneID(s): [2296](#)

Immunogen

Peptide with sequence C-DAVKDKKEEKDR LH, from the internal region of the protein sequence according to NP_001444.2.

Please note the [peptide](#) is available for sale.

Purification and Storage

Purified from goat serum by ammonium sulphate precipitation followed by antigen affinity chromatography using the immunizing peptide.

Supplied at 0.5 mg/ml in Tris saline, 0.02% sodium azide, pH7.3 with 0.5% bovine serum albumin.

Aliquot and store at -20°C. Minimize freezing and thawing.

Applications Tested

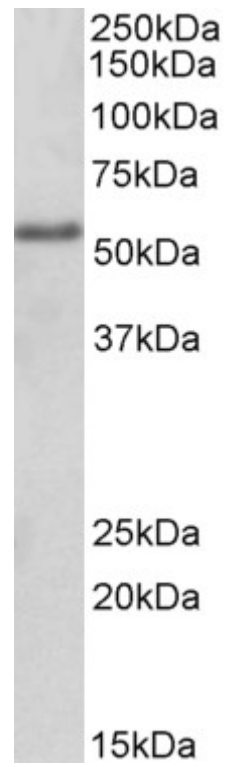
Peptide ELISA: antibody detection limit dilution 1:32000.

Western blot: Approx 55kDa band observed in lysates of cell line HEK293 (calculated MW of 56.8kDa according to NP_001444.2). Recommended concentration: 2-4µg/ml.

Species Reactivity

Tested: Human

Expected from sequence similarity: Human, Mouse, Pig



EB07038 (2 μ g/ml) staining of HEK293 lysate (35 μ g protein in RIPA buffer). Primary incubation was 1 hour.
Detected by chemiluminescence.