



UK Office

Everest Biotech Ltd
Cherwell Innovation Centre
77 Heyford Park
Upper Heyford
Oxfordshire
OX25 5HD
UK

Enquiries:

info@everestbiotech.com

Sales:

sales@everestbiotech.com

Tech support:

support@everestbiotech.com

Tel: +44 (0)1869 238326

Fax: +44 (0)1869 238327

US Office

Everest Biotech c/o Abcore
405 Maple Street, Suite A106
Ramona,
CA 92065
USA

Inquiries:

info@everestbiotech.com

Sales:

usasales@everestbiotech.com

Tech support:

support@everestbiotech.com

Tel: 888-320-4628 (toll-free)

Fax: 888-841-9041

www.everestbiotech.com

**Research Use Only. Not for
diagnostic or therapeutic use.**

EB06950 - Goat Anti-INDO / IDO Antibody

Size: 100µg specific antibody in 200µl



Target Protein

Principal Names: INDO antibody, indoleamine-pyrrole 2,3 dioxygenase antibody, HGNC:6059 antibody, CD107B antibody, IDO antibody, Indoleamine 2,3-dioxygenase antibody, indole 2,3-dioxygenase antibody, IDO1 antibody

Official Symbol: IDO1

Accession Number(s): NP_002155.1

Human GeneID(s): [3620](#)

Immunogen

Peptide with sequence CVLANWKKKDPNK, from the internal region of the protein sequence according to NP_002155.1.

Please note the [peptide](#) is available for sale.

Purification and Storage

Purified from goat serum by ammonium sulphate precipitation followed by antigen affinity chromatography using the immunizing peptide.

Supplied at 0.5 mg/ml in Tris saline, 0.02% sodium azide, pH7.3 with 0.5% bovine serum albumin.

Aliquot and store at -20°C. Minimize freezing and thawing.

Applications Tested

Peptide ELISA: antibody detection limit dilution 1:8000.

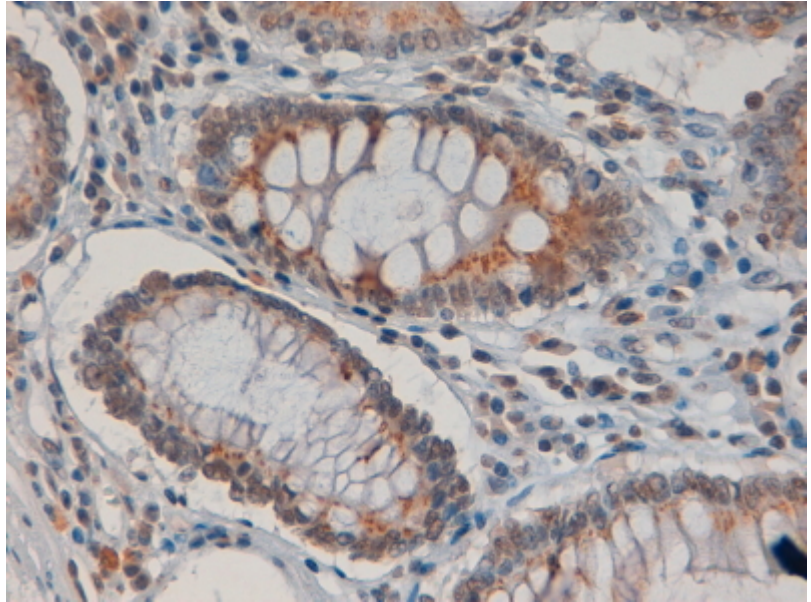
Western blot: Preliminary experiments gave bands at approx 28kDa and 25kDa in lysates of Human Spleen and Tonsil and in Mouse Brain lysate after 1µg/ml antibody staining. Please note that currently we cannot find an explanation in the literature for the bands we observe given the calculated size of 45.3kDa according to NP_002155.1. Both detected bands were successfully blocked by incubation with the immunizing peptide (and BLAST results with the immunizing peptide sequence did not identify any other proteins to explain the additional bands). We would appreciate any feedback from people in the field - have any results been reported with other antibodies/lysates? Have any further splice variants/modified forms been reported?

IHC: In paraffin embedded Human Colon shows textured staining in the cytoplasm of absorptive cells. Recommended concentration, 4-6µg/ml.

Species Reactivity

Tested:

Expected from sequence similarity: Human, Mouse, Rat, Dog



EB06950 (4µg/ml) staining of paraffin embedded Human Colon. Steamed antigen retrieval with citrate buffer pH 6, HRP-staining.