



## EB06839 - Goat Anti-NKG2D / KLRK1 Antibody

Size: 100µg specific antibody in 200µl



### UK Office

#### Everest Biotech Ltd

Cherwell Innovation Centre  
77 Heyford Park  
Upper Heyford  
Oxfordshire  
OX25 5HD  
UK

Enquiries:

[info@everestbiotech.com](mailto:info@everestbiotech.com)

Sales:

[sales@everestbiotech.com](mailto:sales@everestbiotech.com)

Tech support:

[support@everestbiotech.com](mailto:support@everestbiotech.com)

Tel: +44 (0)1869 238326

Fax: +44 (0)1869 238327

### US Office

#### Everest Biotech c/o Abcore

405 Maple Street, Suite A106  
Ramona,  
CA 92065  
USA

Inquiries:

[info@everestbiotech.com](mailto:info@everestbiotech.com)

Sales:

[usasales@everestbiotech.com](mailto:usasales@everestbiotech.com)

Tech support:

[support@everestbiotech.com](mailto:support@everestbiotech.com)

Tel: 888-320-4628 (toll-free)

Fax: 888-841-9041

[www.everestbiotech.com](http://www.everestbiotech.com)

**Research Use Only. Not for  
diagnostic or therapeutic use.**

### Target Protein

**Principal Names:** KLRK1 antibody, NKG2-D antibody, killer cell lectin-like receptor subfamily K, member 1 antibody, HGNC:18788 antibody, D12S2489E antibody, KLR antibody, NK cell receptor D antibody, NKG2-D type II integral membrane protein antibody, CD314 antibody, D12S2489E antibody, FLJ17759 antibody, FLJ75772 antibody, NKG2D antibody

**Official Symbol:** KLRK1

**Accession Number(s):** NP\_031386.2

**Human GeneID(s):** [22914](#)

### Immunogen

Peptide with sequence C-KVYSKEDQDLLK, from the internal region of the protein sequence according to NP\_031386.2.

Please note the [peptide](#) is available for sale.

### Purification and Storage

Purified from goat serum by ammonium sulphate precipitation followed by antigen affinity chromatography using the immunizing peptide.

Supplied at 0.5 mg/ml in Tris saline, 0.02% sodium azide, pH7.3 with 0.5% bovine serum albumin.

Aliquot and store at -20°C. Minimize freezing and thawing.

### Applications Tested

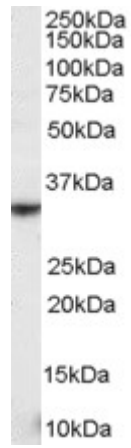
**Peptide ELISA:** antibody detection limit dilution 1:32000.

**Western blot:** Approx 35kDa band observed in human lymph node and human spleen lysates (calculated MW of 25.3kDa according to NP\_031386.1). The observed molecular weight is explained by glycosylation (Han et al, Blood. 2004 Nov 1;104(9):2858-66. Epub 2004 Jul 6; PMID: 15238421). Recommended concentration: 0.1-0.3µg/ml.

### Species Reactivity

**Tested:** Human

**Expected from sequence similarity:** Human, Mouse, Rat



EB06839 staining (0.3 $\mu$ g/ml) of human spleen lysate (RIPA buffer, 35 $\mu$ g total protein per lane). Primary incubated for 1 hour. Detected by western blot using chemiluminescence.