



UK Office

Everest Biotech Ltd
Cherwell Innovation Centre
77 Heyford Park
Upper Heyford
Oxfordshire
OX25 5HD
UK

Enquiries:

info@everestbiotech.com

Sales:

sales@everestbiotech.com

Tech support:

support@everestbiotech.com

Tel: +44 (0)1869 238326

Fax: +44 (0)1869 238327

US Office

Everest Biotech c/o Abcore
405 Maple Street, Suite A106
Ramona,
CA 92065
USA

Inquiries:

info@everestbiotech.com

Sales:

usasales@everestbiotech.com

Tech support:

support@everestbiotech.com

Tel: 888-320-4628 (toll-free)

Fax: 888-841-9041

www.everestbiotech.com

**Research Use Only. Not for
diagnostic or therapeutic use.**

EB06768 - Goat Anti-CCKAR Antibody

Size: 100µg specific antibody in 200µl



Target Protein

Principal Names: CCKAR antibody, cholecystokinin A receptor antibody, HGNC:1570 antibody, CCK-A antibody, CCK1-R antibody, CCKRA antibody, cholecystokinin-1 receptor antibody, cholecystokinin type-A receptor antibody

Official Symbol: CCKAR

Accession Number(s): NP_000721.1

Human GeneID(s): [886](#)

Non-Human GeneID(s): 12425 (mouse), 24889 (rat)

Immunogen

Peptide with sequence C-FEASQKKSARKERKPKST, from the internal region of the protein sequence according to NP_000721.1.

Please note the [peptide](#) is available for sale.

Purification and Storage

Purified from goat serum by ammonium sulphate precipitation followed by antigen affinity chromatography using the immunizing peptide.

Supplied at 0.5 mg/ml in Tris saline, 0.02% sodium azide, pH7.3 with 0.5% bovine serum albumin.

Aliquot and store at -20°C. Minimize freezing and thawing.

Applications Tested

Peptide ELISA: antibody detection limit dilution 1:4000.

Western blot: Preliminary experiments in Human Pancreas lysates gave no specific signal but low background (at antibody concentration up to 1µg/ml).

IHC: In paraffin embedded Human Pancreas, shows cytoplasmic staining of some cells in the islets of Langerhans. Recommended concentration, 10µg/ml.

Immunocytochemistry/Immunofluorescence: This antibody has been successfully used in ICC/IF for RIN-14B cells as described in the following paper: El-Kouhen et al, Pancreas. 2010 Mar;39(2):127-34; PMID: 19959964.

Species Reactivity

Tested: Human, Rat

Expected from sequence similarity: Human

Specific Reference

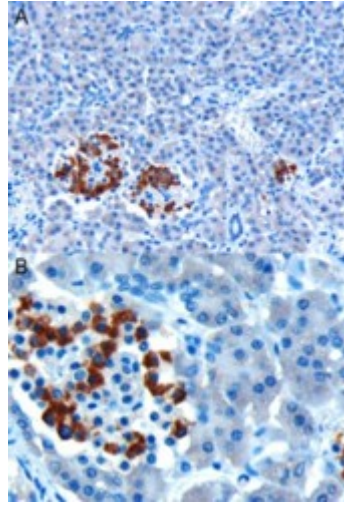
This antibody has been successfully used in the following paper:

El-Kouhen K, Morisset J.

Control of somatostatin (SS) secretion by CCK-1 and CCK-2 receptors' occupation in RIN-14B cells, a rat pancreatic islet cell line.

Pancreas. 2010 Mar;39(2):127-34.

PMID: 19959964



EB06768 (10 μ g/ml) staining of paraffin embedded Human Pancreas. Microwaved antigen retrieval with citrate buffer pH 6, HRP-staining.