



UK Office

Everest Biotech Ltd
Cherwell Innovation Centre
77 Heyford Park
Upper Heyford
Oxfordshire
OX25 5HD
UK

Enquiries:

info@everestbiotech.com

Sales:

sales@everestbiotech.com

Tech support:

support@everestbiotech.com

Tel: +44 (0)1869 238326

Fax: +44 (0)1869 238327

US Office

Everest Biotech c/o Abcore
405 Maple Street, Suite A106
Ramona,
CA 92065
USA

Inquiries:

info@everestbiotech.com

Sales:

usasales@everestbiotech.com

Tech support:

support@everestbiotech.com

Tel: 888-320-4628 (toll-free)

Fax: 888-841-9041

www.everestbiotech.com

**Research Use Only. Not for
diagnostic or therapeutic use.**

EB06690 - Goat Anti-APOE Antibody

Size: 100µg specific antibody in 200µl



Target Protein

Principal Names: APOE antibody, AD2 antibody, MGC1571 antibody, apoprotein antibody, apolipoprotein E antibody, apolipoprotein E3 antibody, Alzheimer disease 2 (APOE*E4-associated, late onset) antibody, LPG antibody

Official Symbol: APOE

Accession Number(s): NP_000032.1

Human GeneID(s): [348](#)

Immunogen

Peptide with sequence C-VG TSAAPVPSDNH, from the C Terminus of the protein sequence according to NP_000032.1.

Please note the [peptide](#) is available for sale.

Purification and Storage

Purified from goat serum by ammonium sulphate precipitation followed by antigen affinity chromatography using the immunizing peptide.

Supplied at 0.5 mg/ml in Tris saline, 0.02% sodium azide, pH7.3 with 0.5% bovine serum albumin.

Aliquot and store at -20°C. Minimize freezing and thawing.

Applications Tested

Peptide ELISA: antibody detection limit dilution 1:32000.

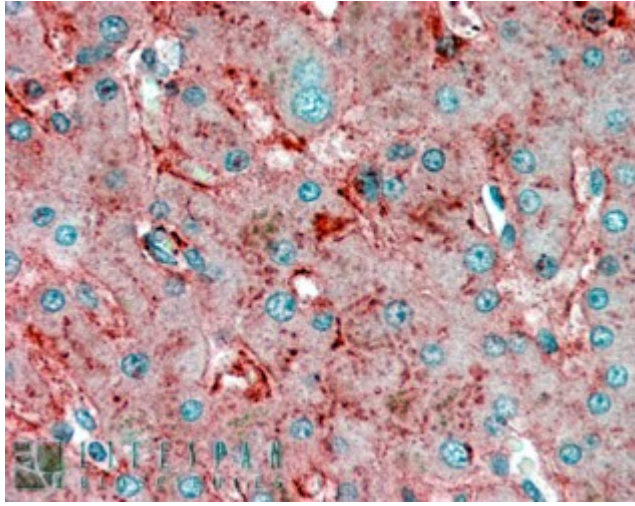
Western blot: Approx. 36kDa band observed in Human Brain lysates (calculated MW of 36.2kDa according to NP_000032.1). Recommended concentration: 0.1-0.3µg/ml.

IHC: In paraffin embedded Human Liver shows extra-cellular staining between hepatocytes. Recommended concentration, 2-4µg/ml.

Species Reactivity

Tested: Human

Expected from sequence similarity: Human



EB06690 (2.5µg/ml) staining of paraffin embedded Human Liver. Steamed antigen retrieval with citrate buffer pH 6, AP-staining.



EB06690 (0.1µg/ml) staining of Human Brain lysate (35µg protein in RIPA buffer). Primary incubation was 1 hour. Detected by chemiluminescence.